

alca

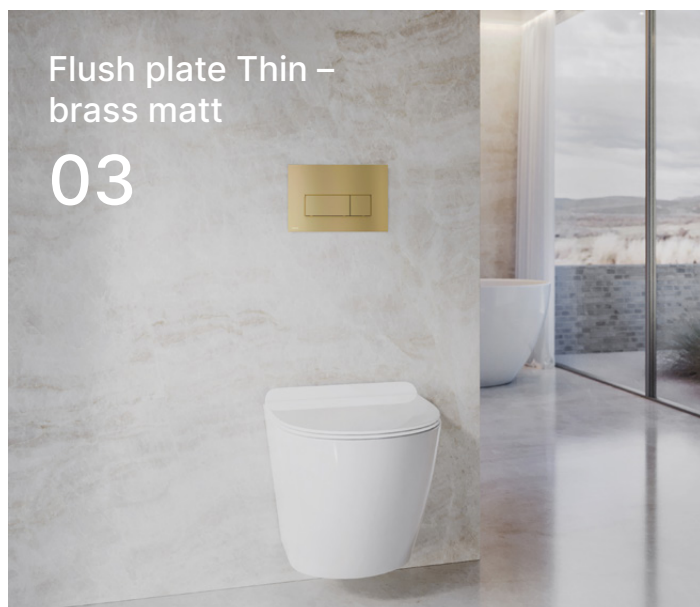
2-2024

Info

new

Flush plate Thin –
brass matt



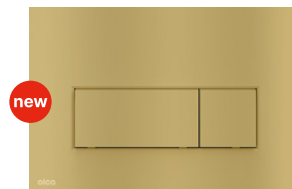


Flush plate Thin – brass matt	03
New colour variant of Linka flush plate	04
We have Red Dot Award 2024!	05
WC systems innovations 2025	06
Expansion of offer with new product variants	07
APV140S and APV240S – new floor drains variants	08
Flexi pipes – increasing the number of pieces in a master box	09
Index	10

Flush plate Thin – brass matt



Program Brass



M57-BR-M BRASS-matt



MOON-BRASS Brass



TURN-BRASS Brass



FUN-BRASS Brass



APZ10BLACK-BRASS Simple
Shower drain with an edge for perforated grids, brass

New in assortment: flush plate in brass matt

Introducing a new colour of plastic flush plate Thin – matt brass (order code M57-BR-M). This product expands the series Thin and at the same time the Brass Program.

It is the ideal complement to our shower drain APZ10BLACK-BRASS Simple and may help to achieve a perfect visual harmony. Get inspired by our new products and give your interior a modern and stylish look.



Flush plates with tilting mechanism

Metallic shades of the Thin series



M57-BR-M BRASS-matt



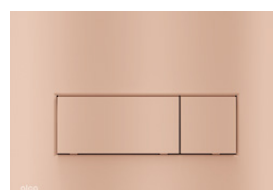
M57-GM-M GUN METAL-matt



M57-G-M GOLD-matt



M57-N-M NICKEL-matt



M57-RG-M RED GOLD-matt

New colour variant of Linka flush plate

alca



Flush plate Linka – gold matt

The white-gold Linka in a matt finish offers an elegant and delicate design, which, like the other color variants, looks minimalistic, but with a charming touch of noblesse.



M1876-7 White-matt/gold-matt



M1876 White-matt



M1878-7 Black-matt/gold-matt



M1878 Black-matt



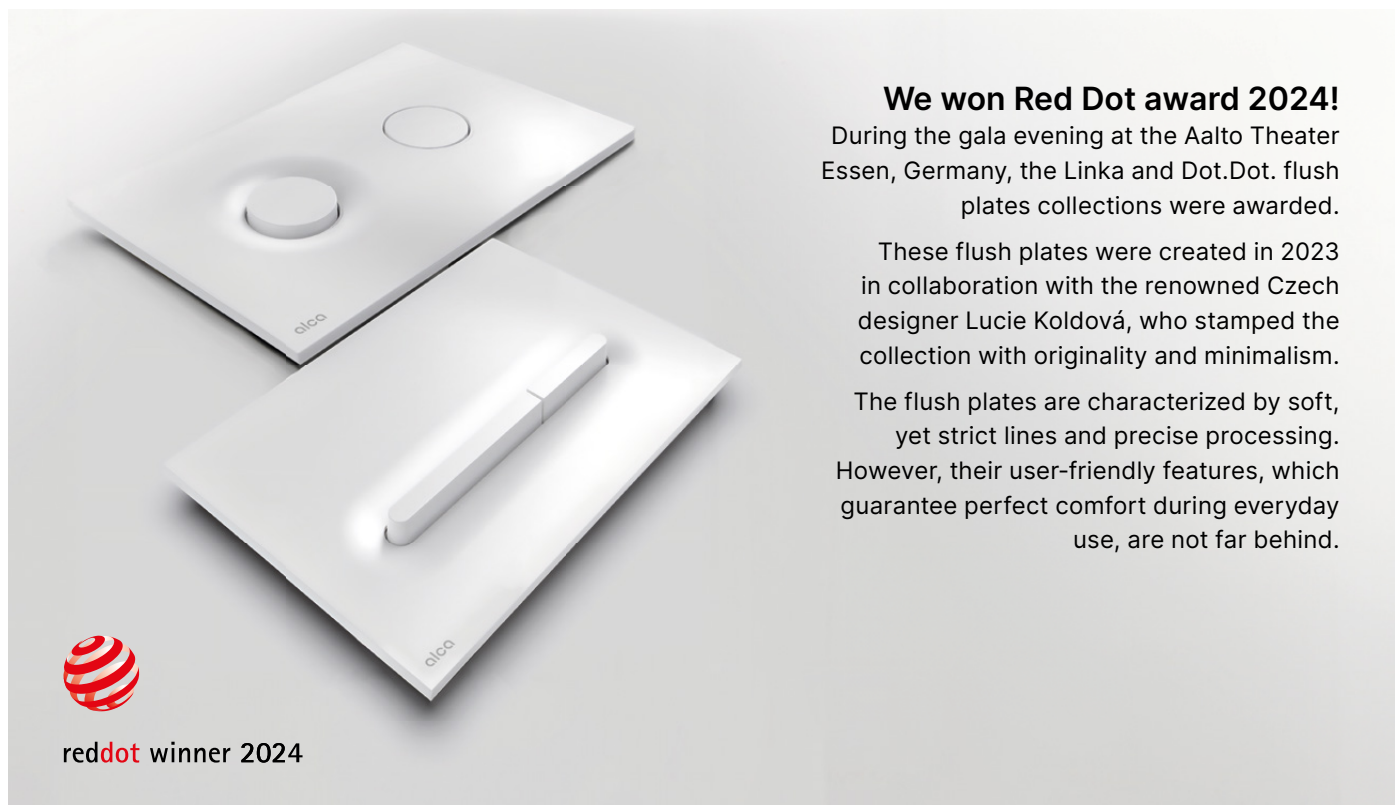
M1876-1 White-matt/chrome-polished



Antibacterial coating



Flush plates with tilting mechanism



We won Red Dot award 2024!

During the gala evening at the Aalto Theater Essen, Germany, the Linka and Dot.Dot. flush plates collections were awarded.

These flush plates were created in 2023 in collaboration with the renowned Czech designer Lucie Koldová, who stamped the collection with originality and minimalism.

The flush plates are characterized by soft, yet strict lines and precise processing. However, their user-friendly features, which guarantee perfect comfort during everyday use, are not far behind.



reddot winner 2024



M1876 White-matt



M1878 Black-matt



M1976 White-matt



M1978 Black-matt



M1876-1 White-matt/chrome-polished



M1878-7 Black-matt/gold-matt polished



M1976-2 White-matt/chrome-matt



M1978-7 Black-matt/gold-matt



M1876-7 White-matt/gold-matt



Antibacterial coating



Flush plates with tilting mechanism



WC systems innovations 2025

Easy, fast and safe

Innovations of Alca WC systems for 2025 include a number of technical improvements. We are already gradually implementing these changes into the production process. These modifications focus primarily on simplifying installation and improving the overall functionality of the products. These changes make installation faster, more accurate and more flexible. With an emphasis on long-term reliability, the WC systems are designed to meet even the most demanding technical installation requirements.



Speed and accuracy

Newly added pins on the installation cover, water supply and waste plug, which can be used to mark the holes positions on the plasterboard.

Instant odor elimination

The connector on the supply elbow of the WC system offers easy connection of the extraction fan. Now also included in Slim WC systems.

Easy and safe waste connection

New double lip seal now used in all Alca WC systems. Prevents undesirable movement of the seal when adjusting the position of the waste elbow.



Expansion of the offer with new product variants

A396SN

Wash-basin waste 5/4", metal, big non-closing plug, for wash-basins without overflow

- shorter thread than A396



A465CK-50

Shower waste and trap CLICK/CLACK, metal

- smaller plug than A465C-50



A491BLACK

Shower waste set, black-matt

- black-matt finish



A492BLACK

Shower waste set for thick trays, black-matt

- black-matt finish



A507CK

Bath CLICK/CLACK waste and trap, metal

- smaller plug than A507CKM



A55KM-WHITE

Bath pop-up waste and trap, white-matt

- white-matt finish



A564B

Bath pop-up waste and trap, with overflow filler, white-polished

- white-polished finish



A90-90P50A *

WC connector – Elbow 90° with connecting pitches DN50

- connection diameter DN50



A80-DN50/40 *

Pipe trap with coupling nut 6/4" and flexi pipe

- connection diameters DN40 and DN50



M9001 *

Extended connector to be used with WC for handicapped

- separate extension part available



M900K-90 *

WC accessories set DN90, 200 mm

- now without a threaded rod



M9000K-90 *

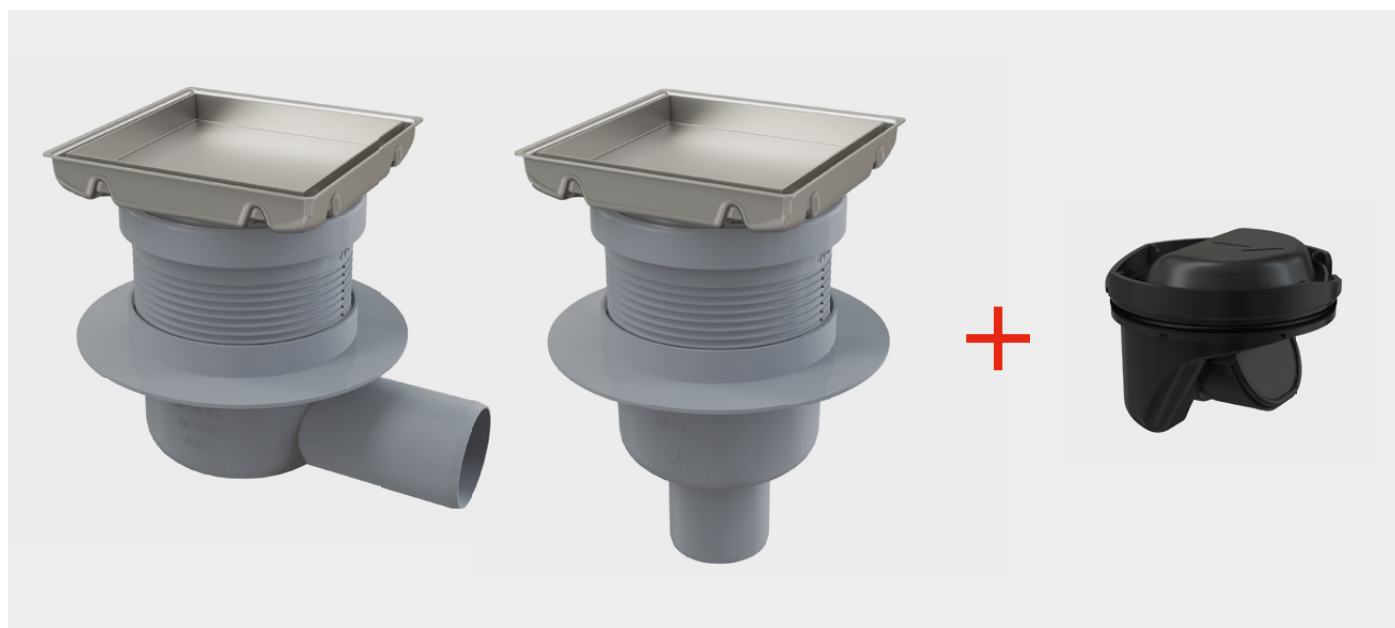
WC accessories set DN90, 340 mm

- now without a threaded rod



APV140S and APV240S – new floor drains variants

Floor drains APV140 and APV240 are now incl. combined odour traps SMART in a package, available under the codes **APV140S** and **APV240S**.







Flexi pipes – increasing the number of pieces in a master carton box

We have increased the number of flexi pipes in master carton boxes and pallets to reduce the cost of shipping and contribute to reducing the carbon footprint. The size of the master carton boxes does not change.

Valid from 1. 9. 2024

		Original quantity		New quantity	
		carton box	palette	carton box	palette
A710	Flexi pipe 40×40	100	1600	130	2080
A720	Flexi pipe 50/40×40/50	50	800	70	1120
A730	Flexi pipe 5/4"×40 plastic	100	1600	120	1920
A740	Flexi pipe 5/4"×40 metal	100	1600	120	1920
A750	Flexi pipe 5/4"×32/40 plastic	100	1600	120	1920
A760	Flexi pipe 5/4"×32/40 metal	100	1600	120	1920
A770	Flexi pipe 6/4"×40/50 plastic	75	1200	90	1440
A780	Flexi pipe 6/4"×40/50 metal	75	1200	90	1440
A791	Flexi pipe 6/4"×40 plastic	100	1600	110	1760
A792	Flexi pipe 6/4"×40 metal	100	1600	110	1760
A793	Flexi pipe 6/4" with reduction to 5/4"×50/40 plastic	75	1200	80	1280
A794	Flexi pipe 40–32×32–40	100	1600	110	1760
A795	Flexi pipe 50/40×40	75	1200	100	1600

Code	Picture	EAN	Description	Quantity (packing)
M57-BR-M		8595580585020	Flush plate for pre-wall installation systems, BRASS-matt	25
M1876-7		8595580585839	Flush plate for pre-wall installation systems, white-matt/gold-matt	25
A396SN		8595580586171	Wash-basin waste 5/4", metal, big non-closing plug, for wash-basins without overflow	30
A465CK-50		8595580585884	Shower waste and trap CLICK/CLACK, metal	30
A491BLACK		8595580581695	Shower waste set, black-matt	15
A492BLACK		8595580587086	Shower waste set for thick trays, black-matt	15
A507CK		8595580585891	Bath CLICK/CLACK waste and trap, metal	20
A55KM-WHITE		8595580585822	Bath pop-up waste and trap, white-matt	20
A564B		8595580586225	Bath pop-up waste and trap, with overflow filler, white-polished	20
A90-90P50A		8595580585808	WC connector – Elbow 90° with connecting pitches DN50	12
A80-DN50/40		8595580586089	Pipe trap with coupling nut 6/4" and flexi pipe	15
M9001		8595580586119	Extended connector to be used with WC for handicapped	*

Code	Picture	EAN	Description	Quantity (packing)
M900K-90		8595580586133	WC accessories set DN90, 200 mm	*
M9000K-90		8595580586140	WC accessories set DN90, 340 mm	*
APV140S		8595580586157	Floor drain 130x130 mm side outlet, two-sided stainless steel grid, combined odour trap SMART	8
APV240S		8595580586164	Floor drain 130x130 mm straight outlet, two-sided stainless steel grid, combined odour trap SMART	8

alca GROUP

alca

Sanitary technology,
system walls

Czech Republic
Alcadrain s.r.o.
Bratislavská 2846
690 02 Břeclav
T: +420 519 821 117 – sale
T: +420 519 821 041 – export
alcadrain@alcadrain.com
www.alcadrain.com

FV
PLAST

Piping systems, floor heating
and ceiling cooling systems

Czech Republic
FV – Plast a.s.
Kozovazská 1049/3
250 88 Čelákovice
T: +420 326 706 711
fv-plast@fv-plast.cz
www.fvplast.com

Our team of specialists is always on hand to help with design, installation and quote project prices.

The warranty stated for individual products applies only to the functional technical properties of the product, does not apply to wear and tear of the product caused by its normal use or defects caused by non-compliance with general product handling principles or non-compliance with product instructions. Complete warranty conditions at www.alcadrain.com/guarantee.



Czech manufacturer, ISO 9001:2015
Edition 2/2024 EN, © Alcadrain s.r.o.
Changes in dimensions and design reserved.