

alca drain

1-2023

Info

new

Concealed washing machine trap for connecting two appliances



from March 1, 2023

significantly

reduced price

Concealed washing machine trap for connecting two appliances	3
---	----------

Universal ballast-based mounting system for photovoltaic panels on flat roofs	5
--	----------

Design Plus ISH 2023 Award for the terrace drainage channel with a grid for embedding tiles or stone	8
---	----------

New products list	13
--------------------------------	-----------

new

alca drain

Concealed washing machine trap
for connecting two appliances,
stainless steel

from March 1, 2023

significantly

reduced price



- **All in one package**
- **Saving space and time during installation**
Only one mounting hole and one drain outlet to connect 2 appliances at the same time
- **Easy cleaning**
The trap is located in a concealed installation box – it allows easy access for cleaning and maintenance
- **Additional connectors to purchase (Ø17–23 a Ø9–16)**
- **Suitable for new buildings and renovations**
A professional way of connecting two appliances to one waste outlet. Ideal option for those who plan to purchase a second appliance in the future
- **Locking screw**
Securing against unintentional loosening or incorrect installation of the trap



new

alca drain

Concealed washing machine trap for connecting two appliances, stainless steel



- **Installation cover**
It serves for convenient installation of the trap and protects it against dirt during construction work



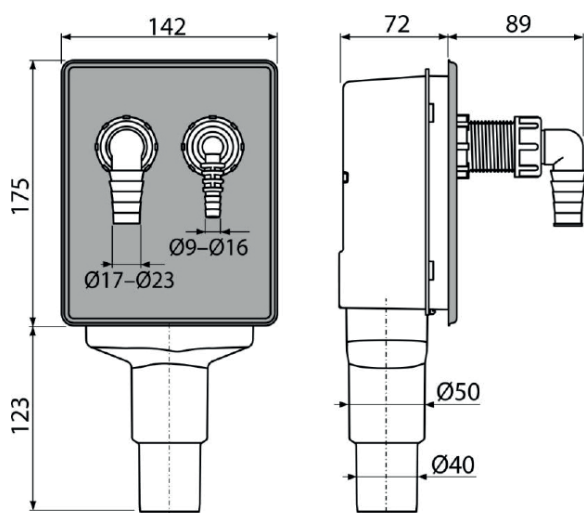
- **Covers**
They ensure 100% protection against sewage odors before connection of the electrical appliances



- **Two separate traps**
They guarantee that waste water cannot be pushed from one appliance to another

APS6

Concealed washing machine trap for connecting two appliances, stainless steel DN40 and DN50



Quantity (packing)	18 pc
Dimensions (piece)	300×165×150 mm
EAN	8595580578473

from March 1, 2023
significantly reduced price



Universal ballast-based mounting system for photovoltaic panels on flat roofs

Alcasolar is a comprehensive solution for mounting photovoltaic panels.

It is a 100% Czech product developed on the basis of experience with the production of Alcasystem system walls.

Alcasolar mounting elements are the ideal solution for flat roofs. The modular system enables to assemble a tailor-made structure according to your needs.

We can deliver photovoltaic panel mounting system in the form of prefabricated structures customized to the needs of given installation, or as a kit that you assemble on site.

Universal ballast-based mounting system for photovoltaic panels on flat roofs

for flat roofs

for different types of panels,
can be customized to installation

for orientation of solar panels
South and East-West

Features:

- Steel elements are hot-dip galvanized
- Plastic components with UV stabilizer and flame retardant
- Rail system, panels can be positioned to the requested position

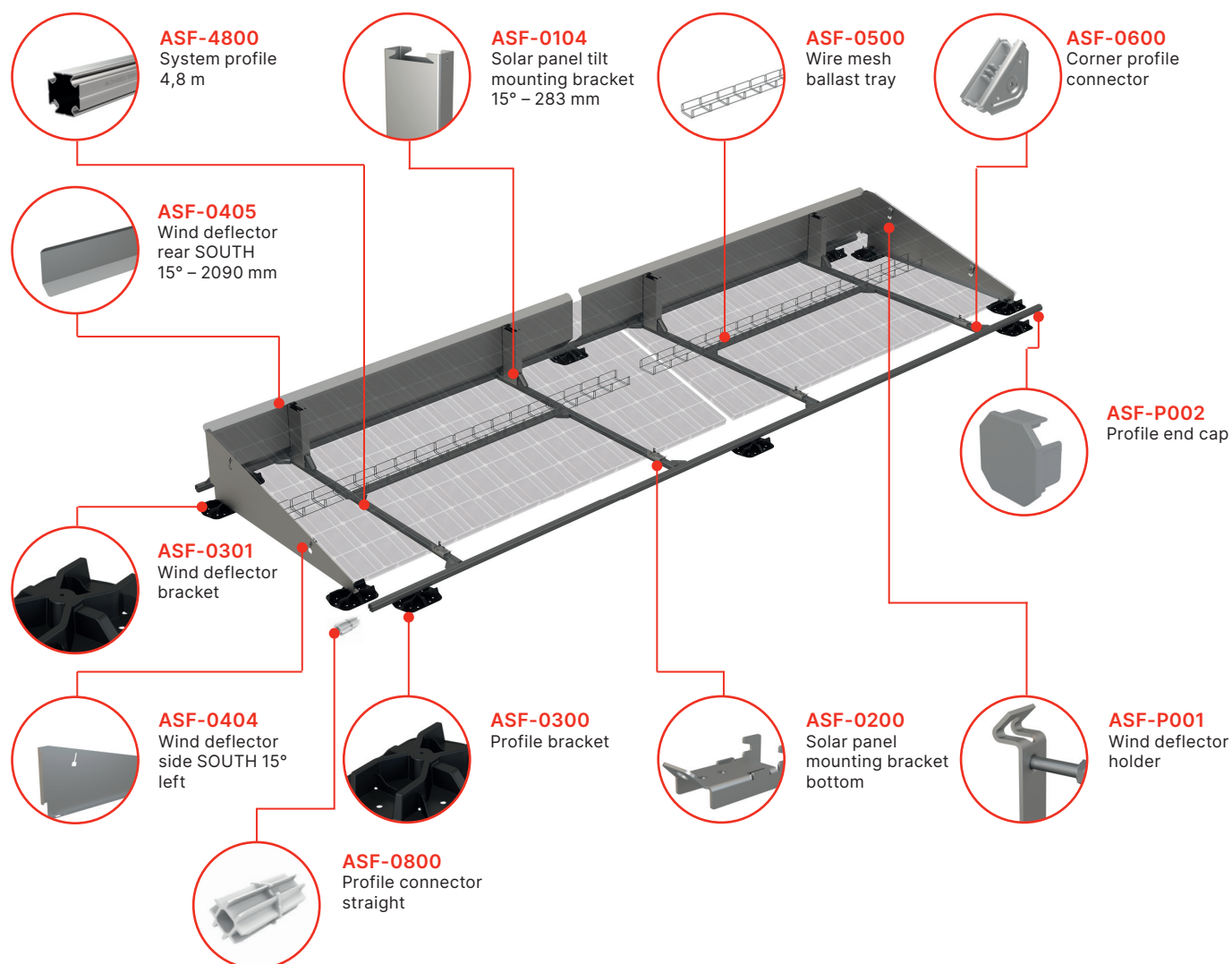
Benefits:

- Anchoring using universal anchors behind the panel frame – minimization of damage to the panel due to thermal expansion
- The ballast-based mounting system placed under the PV panels saves space
- Plastic brackets with a smooth surface ensure safe placing of the mounting system of the flat roof without the risk of damaging the roof insulation
- Minimal number of components – simple and quick assembly
- Tension hole in panel anchor – one-person installation possible
- Other structures for the photovoltaic system, such as holders for switchboards, can be easily assembled from the system as well

version for East-West orientation ►

▲ version for South orientation

Overview of mounting elements for photovoltaic panels on flat roofs



Customized solutions

- The slope of the panel is 10° or 15°, the slope can be adjusted as desired
- The possibility of tailor-made production

Contact for more information:
alcafix@alcafix.cz



WE WON ISH 2023 DESIGN AWARD

DESIGN PLUS

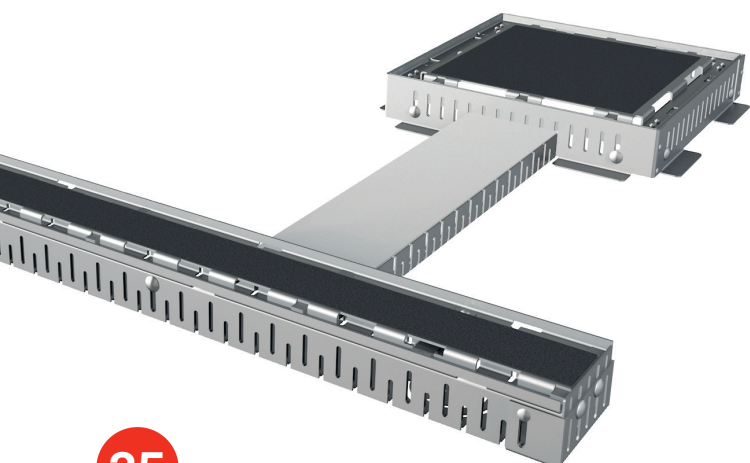
powered by: ISH



WINNER 2023

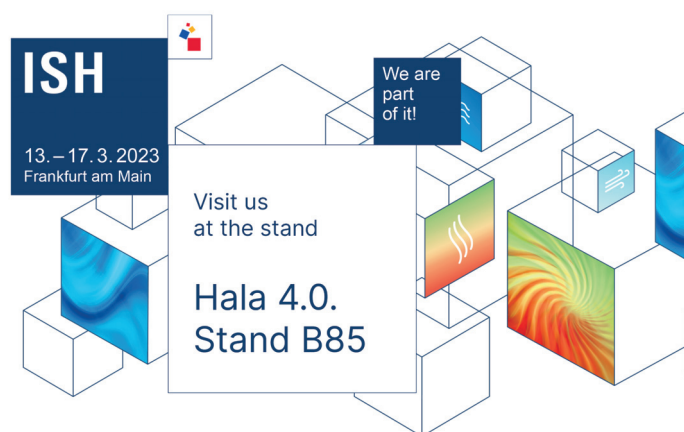
The invisible solution of the terrace drainage channel also caught the attention of the judges at the ISH Trade Fair, who awarded it the Design Plus ISH 2023 Award.

Drainage channels are suitable along facades, on roof and ground terraces, in stonecrop plants or walkways. The drainage system is linear with the possibility of connecting in the transverse and longitudinal direction.



13.–17. 3. 2023

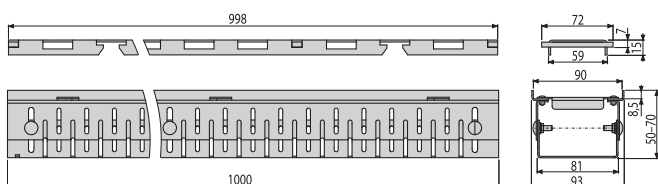
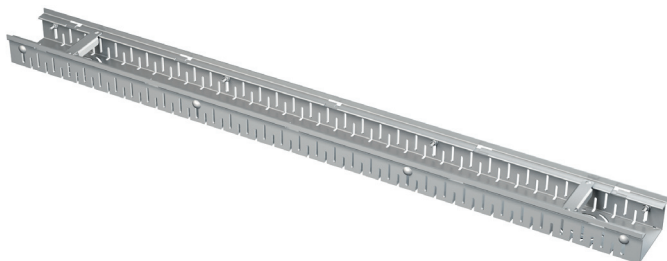
Exhibition center Frankfurt am Main





ADZ104V-1000

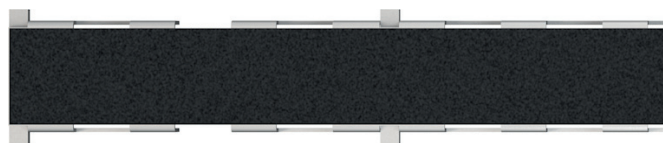
Drainage channel 100 mm adjustable + Grid for embedding tiles, galvanized steel



Quantity (packing)	1 pc
Dimensions (piece)	1000×93×70 mm
EAN	8595580581206

ADZ104V-1000

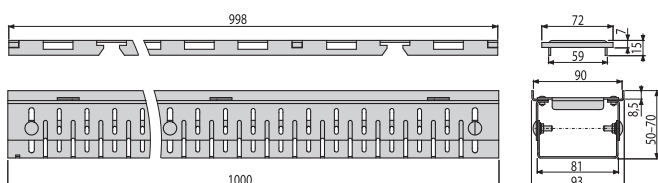
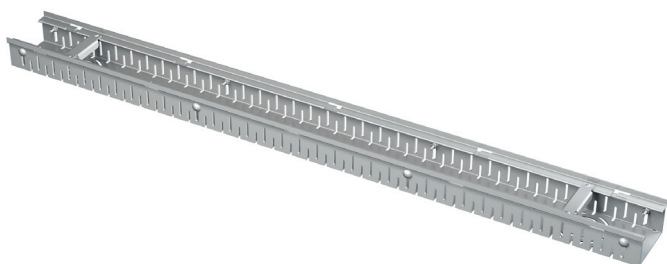
Grid for embedding tiles – The grid is included



All in package

ADZ304V-1000

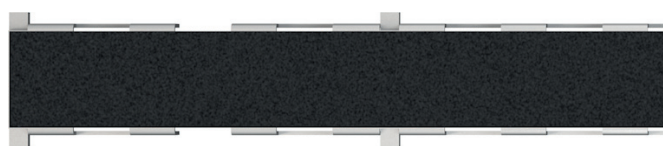
Drainage channel 100 mm adjustable + Grid for embedding tiles, stainless steel



Quantity (packing)	1 pc
Dimensions (piece)	1000×93×70 mm
EAN	8595580581213

ADZ304V-1000

Grid for embedding tiles – The grid is included



All in package

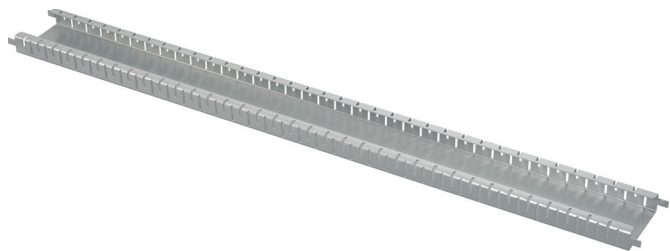


ADZ-PT101

Connection tunnel, galvanized steel

ADZ-PT301

Connection tunnel, stainless steel

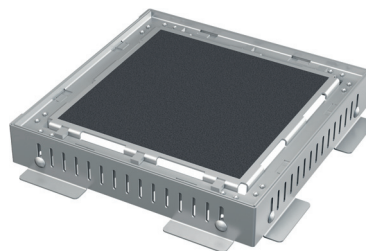


ADZ-NA101

Drain throat extension neck + Grid for embedding tiles
300×300, galvanized steel

ADZ-NA301

Drain throat extension neck + Grid for embedding tiles
300×300, stainless steel



Quantity (packing)	1 pc
Dimensions (piece)	1000×100×30 mm
EAN ADZ-PT101	8595580581220
EAN ADZ-PT301	8595580581237

Quantity (packing)	1 pc
Dimensions (piece)	340×1340×74 mm
EAN ADZ-NA101	8595580581244
EAN ADZ-NA301	8595580581251



ADZ351V

Drainage channel 75 mm adjustable, stainless steel



ADZ-R101

Grid for drainage channel 75 mm, galvanized steel

ADZ-R301

Grid for drainage corner channel 75 mm, stainless steel



ADZ-R102

Grid for drainage channel 75 mm, galvanized steel

ADZ-R302

Grid for drainage channel 75 mm, stainless steel



ADZ-R103

Grid for drainage channel 75 mm, galvanized steel

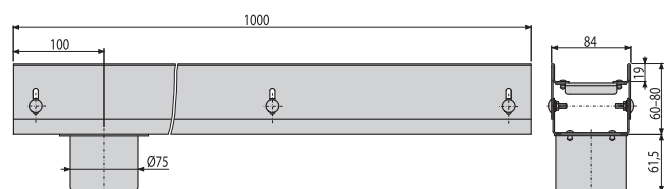
ADZ-R303

Grid for drainage channel 75 mm, stainless steel



ADZ-R304

Grid for drainage channel 75 mm, stainless steel



Quantity (packing)	1 pc
Dimensions (piece)	1000×84×122 mm
EAN	8595580580308

ADZ-P003

End cap for drainage channel 75 mm, galvanized steel



ADZ-P001

End cap for drainage channel 75 mm, stainless steel

ADZ-P007

Coupler for drainage channel 75 mm, galvanized steel



ADZ-P005

Coupler for drainage channel 75 mm, stainless steel

ADZ-P011

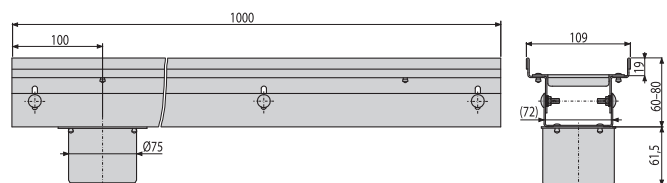
End cap for drainage channel 75 mm, stainless steel





ADZ352V

Drainage channel 100 mm adjustable, stainless steel



Quantity (packing)	1 pc
Dimensions (piece)	1000×109×122 mm
EAN	8595580580315

ADZ-P004

End cap for drainage channel 100 mm, galvanized steel



ADZ-P002

End cap for drainage channel 100 mm, stainless steel

ADZ-P008

Coupler for drainage channel 100 mm, galvanized steel



ADZ-P006

Coupler for drainage channel 100 mm, stainless steel

ADZ-P012

End cap for drainage channel 100 mm, stainless steel



ADZ-R121

Grid for drainage channel 100 mm, galvanized steel

ADZ-R321

Grid for drainage channel 100 mm, stainless steel



ADZ-R122

Grid for drainage channel 100 mm, galvanized steel

ADZ-R322

Grid for drainage channel 100 mm, stainless steel



ADZ-R123

Grid for drainage channel 100 mm, galvanized steel

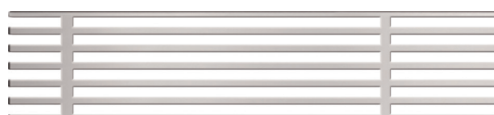
ADZ-R323

Grid for drainage channel 100 mm, stainless steel












ADZ-R324

Grid for drainage channel 100 mm, stainless steel



Code	Picture	EAN	Description
APS6		8595580578473	Concealed washing machine trap for connecting two appliances, stainless steel DN40 and DN50
ADZ104V-1000		8595580581206	Drainage channel 100 mm adjustable + Grid for embedding tiles, galvanized steel
ADZ304V-1000		8595580581213	Drainage channel 100 mm adjustable + Grid for embedding tiles, stainless steel
ADZ-PT101		8595580581220	Connection tunnel, galvanized steel
ADZ-PT301		8595580581237	Connection tunnel, stainless steel
ADZ-NA101		8595580581244	Drain throat extension neck + Grid for embedding tiles 300x300, galvanized steel
ADZ-NA301		8595580581251	Drain throat extension neck + Grid for embedding tiles 300x300, stainless steel
ADZ351V		8595580580308	Drainage channel 75 mm adjustable, stainless steel
ADZ-R101		8595580548001	Grid for drainage channel 75 mm, galvanized steel
ADZ-R301		8595580548056	Grid for drainage channel 75 mm, stainless steel
ADZ-R102		8595580547998	Grid for drainage channel 75 mm, galvanized steel
ADZ-R302		8595580548063	Grid for drainage channel 75 mm, stainless steel

Code	Picture	EAN	Description
ADZ-R103		8595580548018	Grid for drainage channel 75 mm, galvanized steel
ADZ-R303		8595580548070	Grid for drainage channel 75 mm, stainless steel
ADZ-R304		8595580548599	Grid for drainage channel 75 mm, stainless steel
ADZ-P003		8595580548131	End cap for drainage channel 75 mm, galvanized steel
ADZ-P001		8595580548117	End cap for drainage channel 75 mm, stainless steel
ADZ-P007		8595580548179	Coupler for drainage channel 75 mm, galvanized steel
ADZ-P005		8595580548155	Coupler for drainage channel 75 mm, stainless steel
ADZ-P011		8595580561505	End cap for drainage channel 75 mm, stainless steel
ADZ352V		8595580580315	Drainage channel 100 mm adjustable, stainless steel
ADZ-R121		8595580548025	Grid for drainage channel 100 mm, galvanized steel
ADZ-R321		8595580548087	Grid for drainage channel 100 mm, stainless steel
ADZ-R122		8595580548032	Grid for drainage channel 100 mm, galvanized steel

Code	Picture	EAN	Description
ADZ-R322		8595580548094	Grid for drainage channel 100 mm, stainless steel
ADZ-R123		8595580548049	Grid for drainage channel 100 mm, galvanized steel
ADZ-R323		8595580548100	Grid for drainage channel 100 mm, stainless steel
ADZ-R324		8595580548605	Grid for drainage channel 100 mm, stainless steel
ADZ-P004		8595580548148	End cap for drainage channel 100 mm, galvanized steel
ADZ-P002		8595580548124	End cap for drainage channel 100 mm, stainless steel
ADZ-P008		8595580548186	Coupler for drainage channel 100 mm, galvanized steel
ADZ-P006		8595580548162	Coupler for drainage channel 100 mm, stainless steel
ADZ-P012		8595580561512	End cap for drainage channel 100 mm, stainless steel

alca GROUP

alcadrain

Sanitary systems

Czech Republic
Alcadrain s.r.o.
Komunardů 1626/35
170 00 Praha 7 – Holešovice
T: +420 519 821 117 – Sales Dept. CZ
T: +420 519 821 041 – Export Dept.
alcadrain@alcadrain.cz
www.alcadrain.com

alcapipe

Piping systems

Czech Republic
FV – Plast, a.s.
Kozovazská 1049/3
250 88 Čelákovice
T: +420 326 706 711
fv-plast@fv-plast.cz
www.fvplast.com

alcafix

System walls

Czech Republic
Alcadrain s.r.o.
Komunardů 1626/35
170 00 Praha 7 – Holešovice
alcafix@alcafix.cz
www.alcafix.com

Our team of specialists is always on hand to help with design, installation and quote project prices.

* The warranty covers only the functional technical properties of the product, does not cover wear and tear of the product caused by its normal use or defects caused by non-compliance with the general principles of handling the product or non-compliance with the product instructions. Complete warranty conditions at <https://www.alcadrain.com/en/customer-services/warranty-and-warranty-certificate>



Czech producer, ISO 9001:2015
Info 1/2023 EN, © Alcadrain s.r.o.
Changes in dimensions and designs reserved.