

# alcea

Outdoor drainage  
system

[www.alcadrain.com](http://www.alcadrain.com)



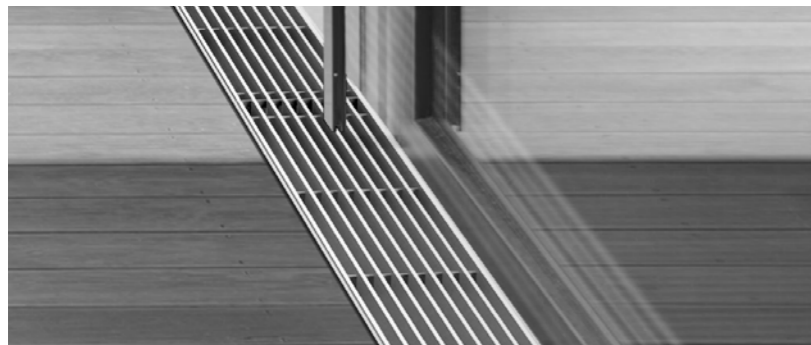
# Content



**4-25 Outdoor drains**  
Due to its unique characteristics it offers maximum variability as well as good load capacity and durability.



**21-22 Outdoor slotted channels**  
Slotted outdoor drainage is especially suitable for office and residential buildings with high demands on design.



**26-29 Drainage channels**  
It is used for surface drainage around buildings and protection against moisture and washout.

- 6** Extended warranty – valid when installed by a professional plumber
- A15** Load class
- UV** UV-resistant material
- Heat** Heat-resistant material
- Frost** Frost-resistant material
- Lock** Locking mechanism



## 32-33

### Floor drains

They serve for point drainage of outdoor areas and technical rooms.

INSTALLATION VIDEO



<b>Outdoor drains</b> .....	<b>4-25</b>
Reduced outdoor drains LOW, A15, B125 .....	<b>6-13</b>
Outdoor drains HOME, A15 .....	<b>18</b>
Outdoor drains STANDARD, B125 .....	<b>19</b>
Outdoor drains PROFI, C250 .....	<b>22-25</b>
Outdoor slotted channels, C250 .....	<b>26-31</b>
Outdoor drains TOP, D400 .....	<b>23</b>
References .....	<b>24-25</b>
<b>Facade and terrace drainage channels</b> .....	<b>26-29</b>
Facade and terrace drainage channels 75 mm .....	<b>28</b>
Facade and terrace drainage channels 100 mm .....	<b>29</b>
<b>Universal rain drums</b> .....	<b>30-31</b>
<b>Floor drains</b> .....	<b>32-33</b>
<b>Sample drain installation according to load class</b> .....	<b>34-35</b>



# Outdoor drains

They represent a sophisticated outdoor drainage system with innovative profiling of the drain channel body, which ensures easy installation, high durability and load up to 40 tons.

A15 B125 C250 D400

6

year guarantee

### Modular system

The modular system allows simple modification of the drain channel from the side, front or bottom directions (Modules "I", "L", "T" and "X"). One of the greatest advantages is the variable waste connect-ability from the bottom and side. All connections are secured with locks for easy installation.

### Warranty 6 years

Material of the drain and grid, technological procedures, periodic stress testing and quality control of production within the ISO 9001: 2015 system allow to provide a six-year warranty.

### Fast assembly

A comprehensive set of accessories is used for a reliable connection of the outdoor drain channels and the waste pipes. The stability and rigidity of the drains in the subsoil can be increased by installing threaded steel rods in the prepared lower parts of the drains. Application of ALCA drains significantly reduces installation time, expertise needed and financial costs

### Innovative material

Our outdoor drain body in comparison to the polymer concrete alternative is noticeably lighter and after installation into the concrete ALCA outdoor drains are also comparatively rigid. Low drain channels weight reduces the cost of transport and increases its efficiency. Handling on the construction site is not physically demanding even without usage of mechanization. The material is enriched with talc, thanks to which it is strong and can be drilled into it.

### Drain box function:

- It provides access to the outdoor drainage system for maintenance and cleaning (to ensure sufficient flow)
- Helps capture dirt and sand
- It allows connection to waste pipes DN110, DN160 and DN200

For each type of outdoor drainage channel we offer an adequate drain box, which is fully compatible with the relevant shape of the drainage body. The drain box is simply connected during installation to the drain with the help of the snap mechanism without using any tools. Thorough service is essential for maintaining long-term outdoor high flow rates for our outdoor drainage system.

## Advantages of Alca outdoor drains

	OUTDOOR DRAINS ALCA	POLYMER-CONCRETE DRAINS
<b>Price</b>	lower price, excellent price vs performance ratio	higher price
<b>Connectivity, modularity</b>	connections – side, bottom and front	inability for additional connections
	ribs for anchoring in concrete	almost smooth surface – more difficult connection with the substrate material
<b>Fast assembly</b>	lock mechanism for easy connecting	complicated connection of different parts
	yes	no
<b>Weight</b>	easy handling, transportation and installation	heavy – higher transport costs, difficult handling
	PP – polypropylene filled with talcum = hard, not brittle	hard but brittle
<b>Material</b>	easy splitting in half, possibility of drilling	drilling of holes is impossible, difficult shortening
	smooth, non-absorbent material, easy to clean	partly absorbent material
<b>Service life</b>	resistant to chemicals	limited chemical resistance
	unlimited lifetime	mechanical wear over time
<b>Application</b>	drainage areas passable by cars and trucks	drainage areas passable by cars and trucks

### Definition of specified load classes according to ČSN EN 1433

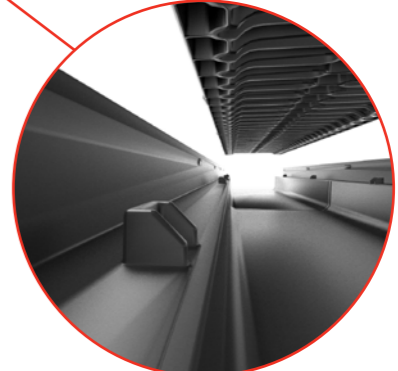
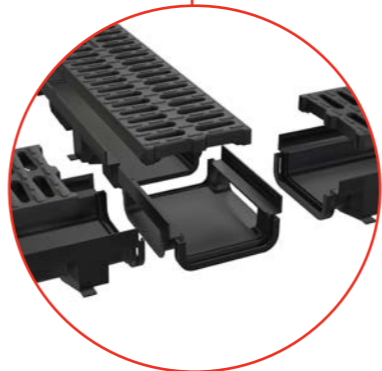
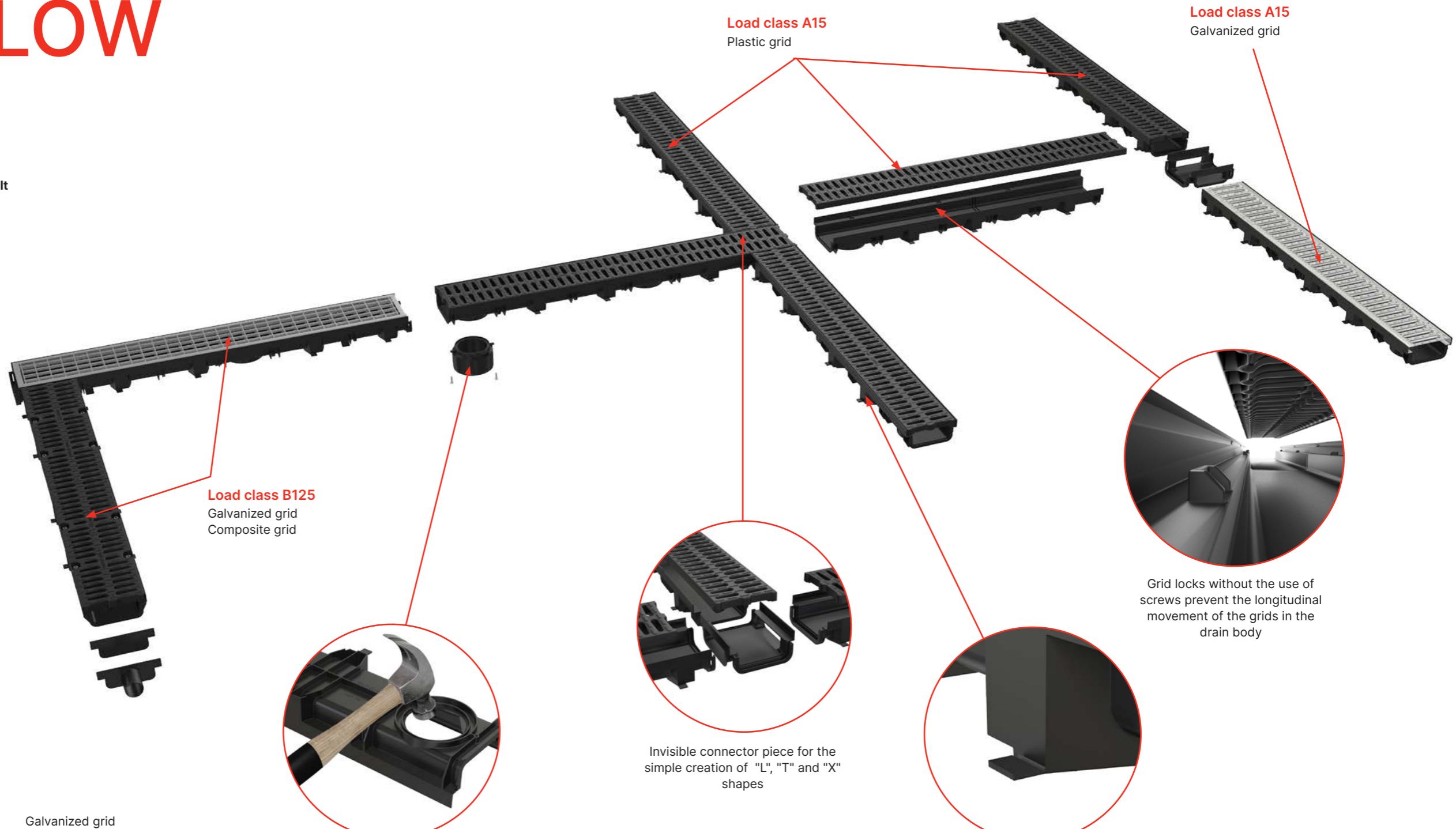
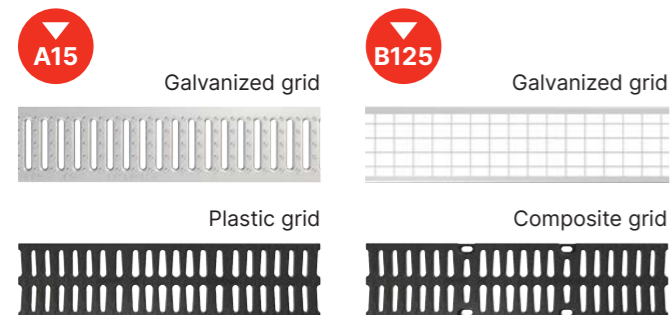
Class	Load categories ALCA
Class A15 (15 kN specified load) Transportation areas used by pedestrians and cyclists. Further areas of similar types, e.g. parks.	LOW, HOME
Class B125 (125 kN specified load) Pedestrian roads, pedestrian zones and similar areas. Parking exclusively for passenger cars and parking houses.	STANDARD
Class C250 (250 kN specified load) Road side lines and nearby sidewalks. Pedestrian zone, professional parking lots for passenger cars.	PROFI
Class D400 (400 kN specified load) Road lines of service and local communications. Parking and parking areas.	TOP

# Reduced outdoor drains LOW

- Low height 60 mm
- Low weight, high solidity
- Increased resistance to frost and road salt
- Modular system for easy installation
- Locking mechanism
- Two types of grids
- High variability of drain body shortening

6

year guarantee





## Accessories

**AVZ-P018**

End cap to close the drain channel with inlet DN40



**AVZ-P017**

End cap to close the drain channel



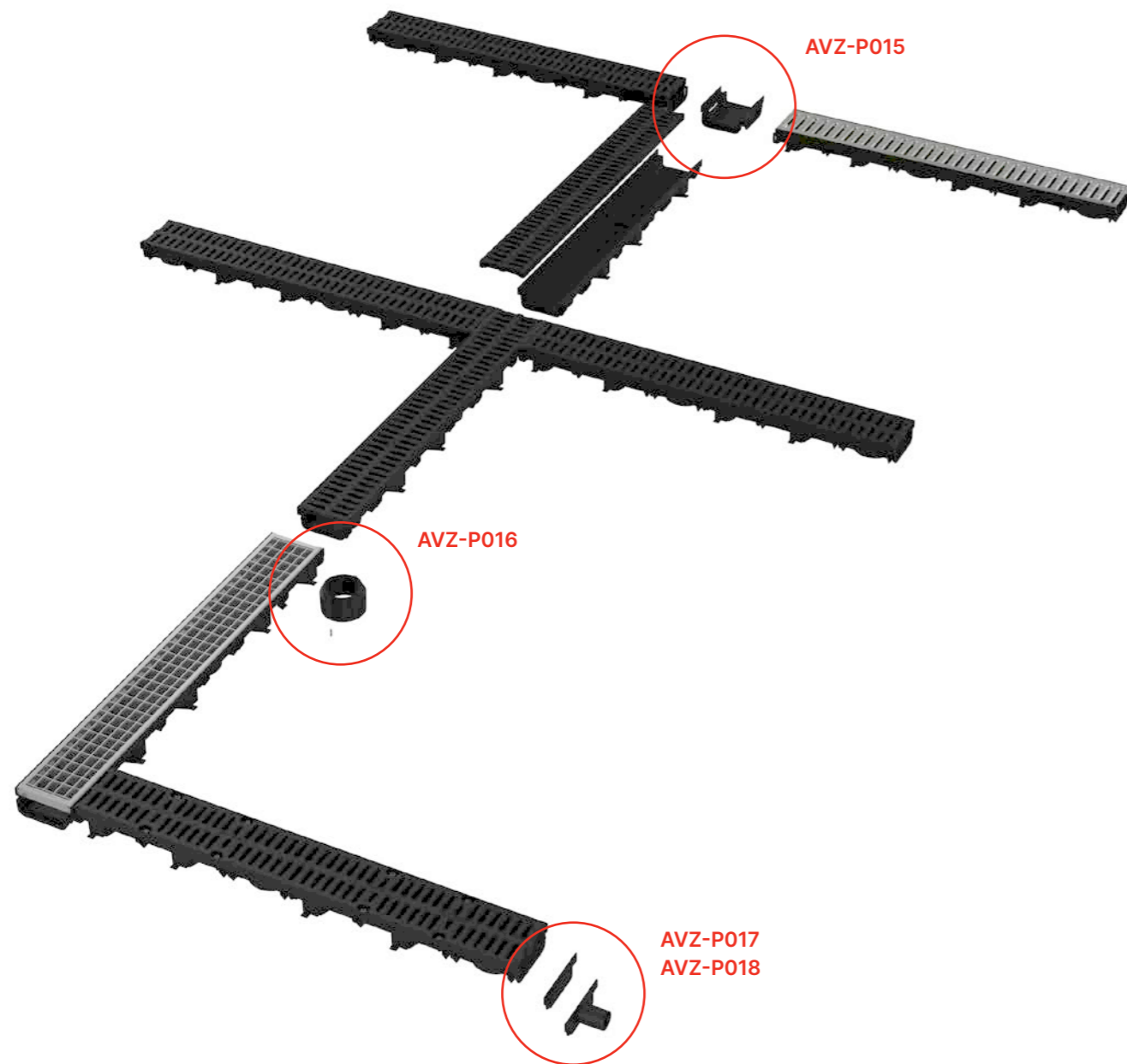
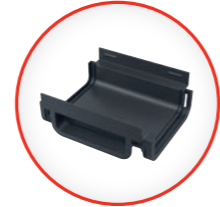
**AVZ-P016**

Socket for connection to the waste pipe DN110



**AVZ-P015**

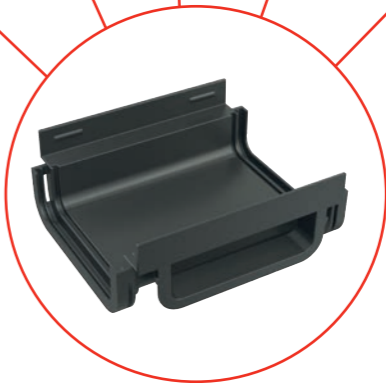
Connecting piece of outdoor drain channel AVZ112



## Main benefits of assembly



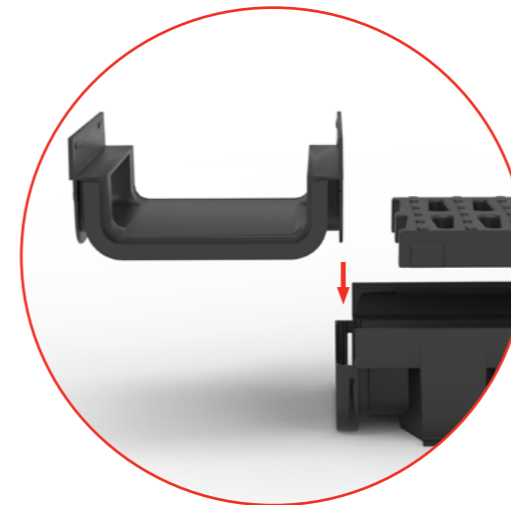
The grid can be shortened anywhere in its length.



Five "ready to cut" places for shortening the drain body allows using the connecting part.



"Ready to cut" opening for easy knocking-off and connection to the waste pipe.



Each part has a male connector at one end and on the second one the female connector. By inserting the male part into the female part is created a firm connection.



The drain body of 0.5 m can be made of the shortened drain body and connecting part AVZ-P015.



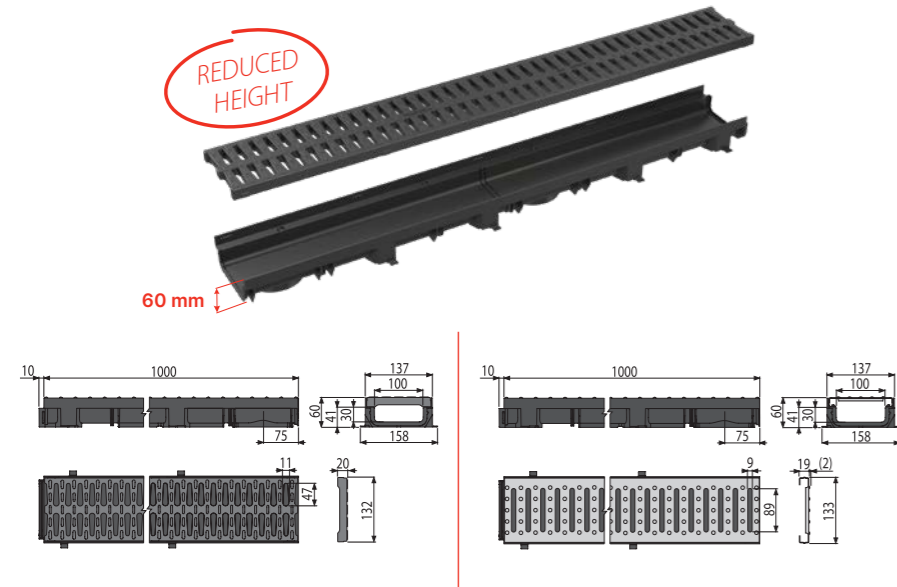
The drain body of 1 m can be made of the shortened drain body and connecting part AVZ-P015.

## Reduced outdoor drains LOW

Basic load class 1,500 kg issuitable for drainage of private land, around swimming pools, in front of garage doors, areas for pedestrians and cyclists, sports grounds, lawns and areas with occasional crossing of passenger cars.



**AVZ112-R501**  
Outdoor drain channel 60 mm with plastic frame and plastic grid A15



Plastic grid  
**(AVZ112-R501)**

Galvanized grid  
**(AVZ112-R102)**

Code	Type of grid	Length	Width	Height	Inlet cross section	Weight
AVZ112-R501	Plastic grid	1000 mm	137 mm	60 mm	320 cm <sup>2</sup> /m	1.4 kg
AVZ112-R102	Galvanized grid	1000 mm	137 mm	60 mm	260 cm <sup>2</sup> /m	2.3 kg

## Garage set

Low outdoor drains with load class A15 can also be ordered as a 3 m garage set with accessories and plastic or galvanized grid. The garage set package contains everything need to install a low outdoor drain around the house.



**AVZ112-G102**  
Galvanized grid

**AVZ112-G501**  
Plastic grid

- Practical waterproof packaging
- All in the package (3 m drain, 2× end cap, 1× socket DN110)
- Suitable for garages, terraces, house entrances (with occasional crossing of passenger cars)



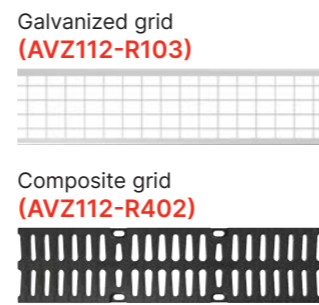
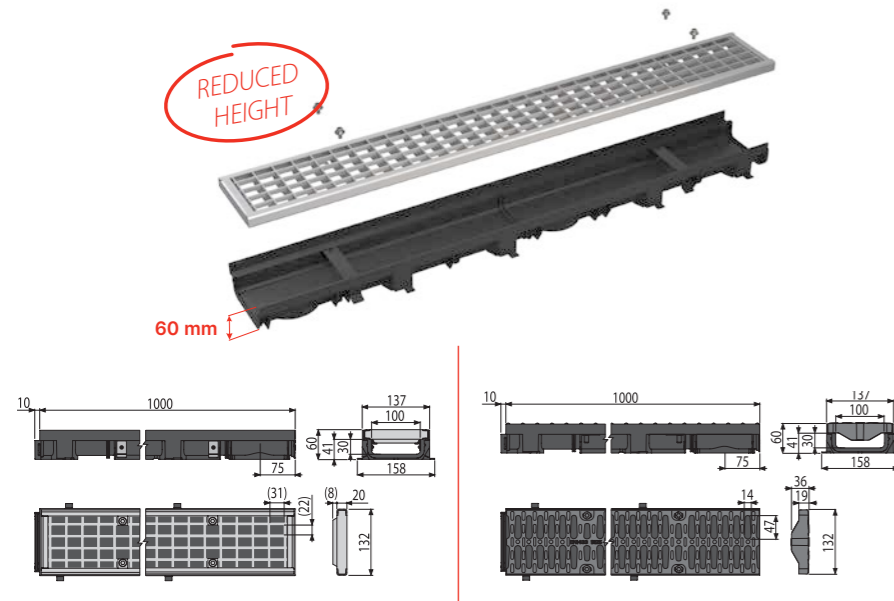


## Reduced outdoor drains LOW

The higher load class of 12,500 kg is designed for drainage of sidewalks, pedestrian zones and similar areas. Parking exclusively for passenger cars and parking houses.



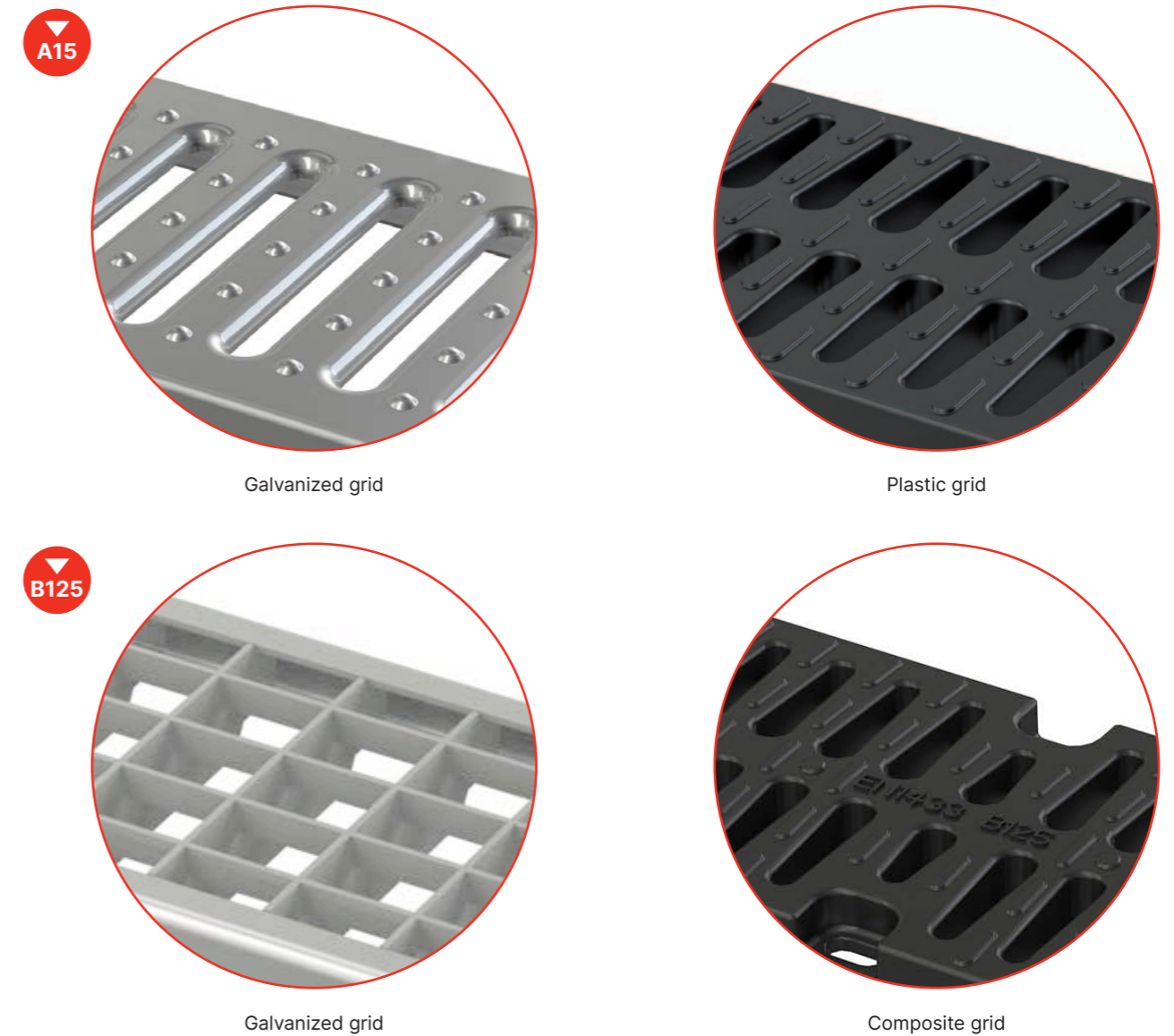
**AVZ112-R103**  
Outdoor drain channel 60 mm with plastic frame and welded galvanized grid B125



Code	Type of grid	Length	Width	Height	Inlet cross section	Weight
AVZ112-R103	Galvanized grid	1000 mm	137 mm	60 mm	881 cm <sup>2</sup> /m	4.1 kg
AVZ112-R402	Composite grid	1000 mm	137 mm	60 mm	360 cm <sup>2</sup> /m	2.5 kg

## Overview of grids

Two load classes, three materials



**Galvanized grids**  
galvanized surface better resists the corrosion

**Plastic grids**  
made of polypropylene highly resistant to frost, chemicals and UV radiation

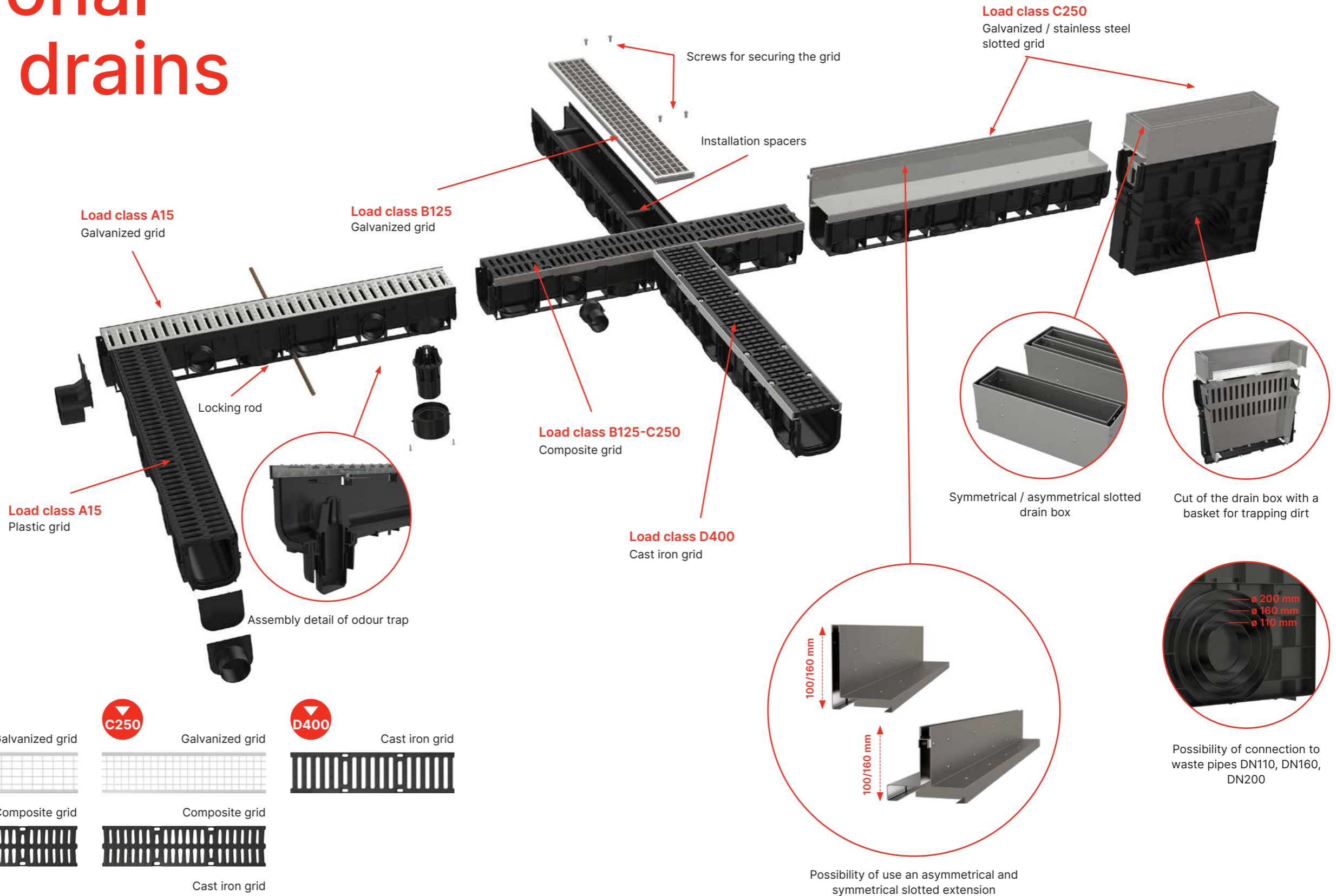
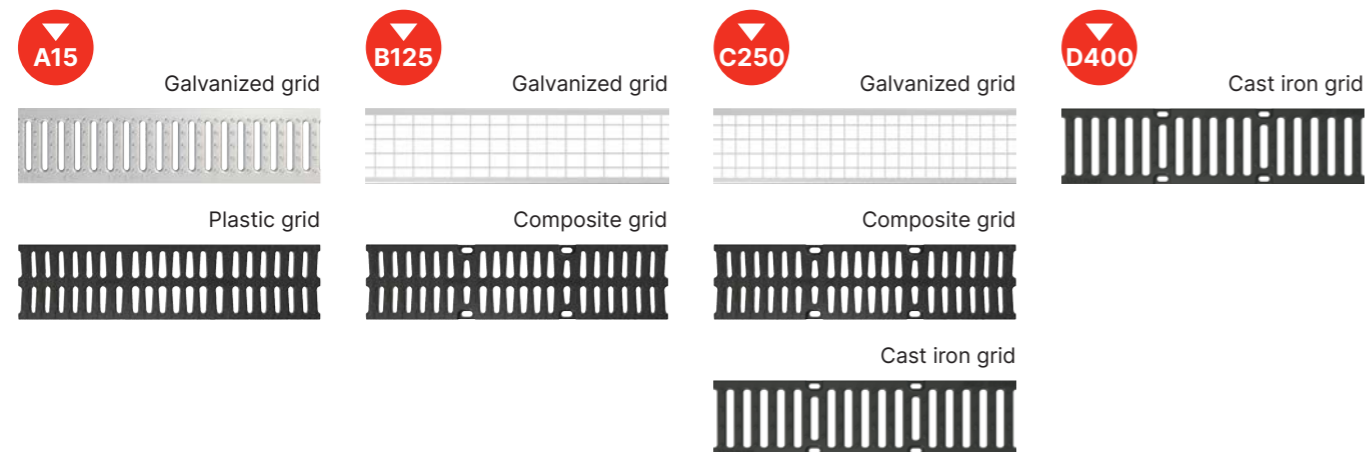
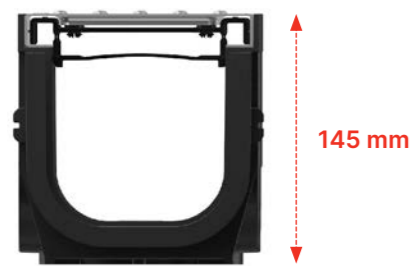
**Composite grids**  
made of polypropylene filled with talc higher load capacity

# Professional outdoor drains

- Modular system
- Locking mechanism
- Increased resistance to frost and road salt
- Knockout holes for easy outlet connection
- Optional insertion of locking bars
- Possibility to split in half (1 m → 2 × 0.5 m)

6

year guarantee





## Accessories

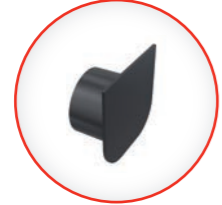
**AVZ-P010**

Side end cap with connection to the waste pipe DN110



**AVZ-P004**

End cap to close the drain channel with a socket for inlet DN75



**AVZ-P001**

Socket for connection to the waste pipe DN110



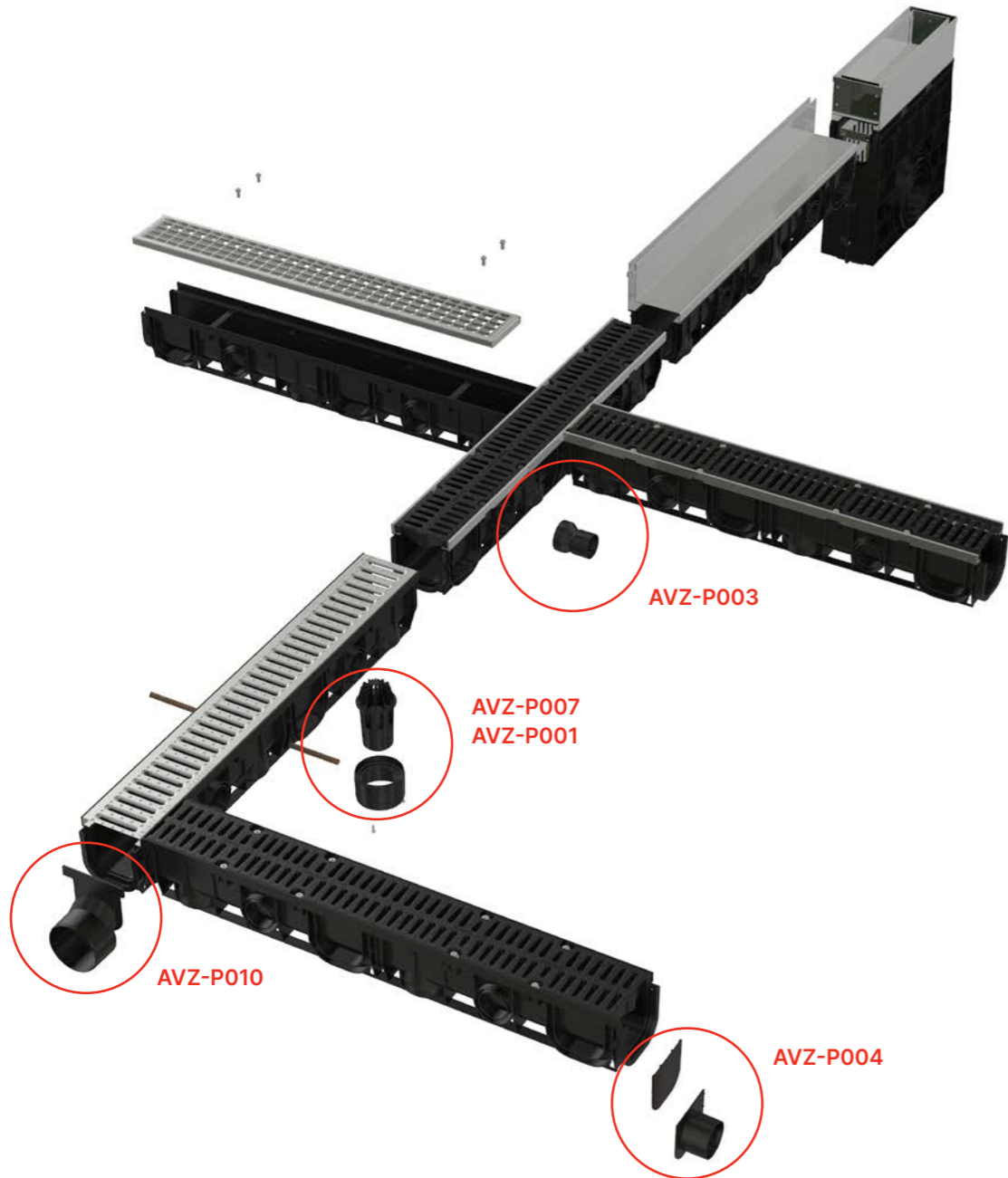
**AVZ-P003**

Adapter for connection to a side inlet DN50



**AVZ-P007**

Odour trap for outdoor drains



## Main benefits of assembly



Each part of the drain has at one end a male connection and a female on the other (same principal as electrical plug). By inserting the male part into the female part you achieve a firm connection. Connected drain channels hold the straight line.



The drain can be cut in half and easily connected to the other pieces by using the available locking mechanism. The cut piece can also be connected.



For additional connection of the inlet pipe the drain body contains four "ready to cut" side openings, which can be fitted with a pipe DN50. Frontal connection for DN75 and DN110.



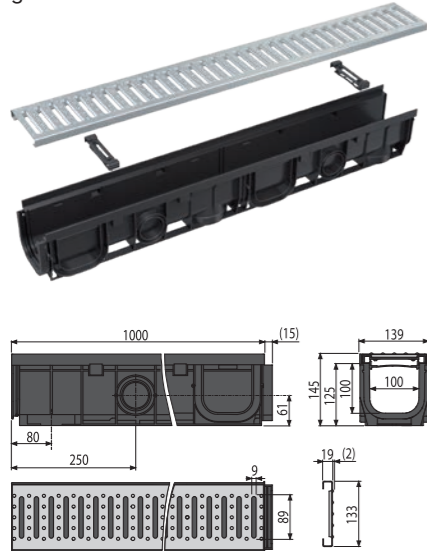
Modular connection system without the need for additional elements. That brings not only easy installation, but also cost savings. All available shapes of coupling "I", "L", "T" and "X" can be achieved without additional accessories.

## Outdoor drains and drain boxes HOME

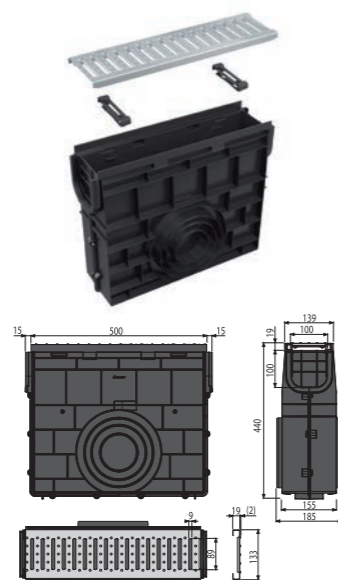
Basic load class 1,500 kg suitable for drainage of private land, around swimming pools, in front of garage doors, areas for pedestrians and cyclists, sports grounds, lawns and areas with occasional crossing of passenger cars.



**AVZ102-R102**  
Outdoor drain channel 100 mm with plastic frame and galvanized "C" profile grid A15



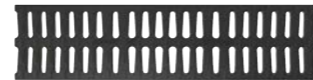
**AVZ102R-R102S**  
Outdoor drain box for AVZ102 with plastic frame and galvanized "C" profile grid A15



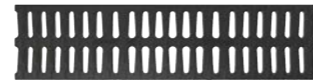
Galvanized grid  
**(AVZ102-R102)**



Plastic grid  
**(AVZ104-R401)**



Plastic grid  
**(AVZ102-R501)**



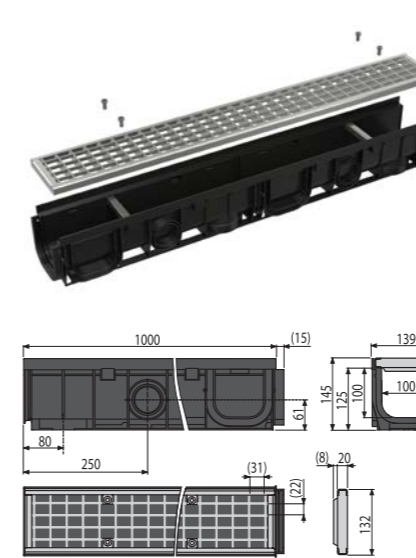
Code	Type of grid	Length	Width	Height	Inlet cross section	Weight
AVZ102-R102	Galvanized grid	1000 mm	139 mm	145 mm	260 cm <sup>2</sup> /m	3.6 kg
AVZ102R-R102S	Galvanized grid	500 mm	139/185 mm	440 mm	130 cm <sup>2</sup> /m	3.9 kg
AVZ104-R401	Plastic grid	1000 mm	139 mm	145 mm	364 cm <sup>2</sup> /m	3.6 kg
AVZ104R-R401	Plastic grid	500 mm	139/185 mm	440 mm	182 cm <sup>2</sup> /m	4 kg
AVZ102-R501	Plastic grid	1000 mm	139 mm	145 mm	260 cm <sup>2</sup> /m	7.4 kg

## Outdoor drains and drain boxes STANDARD

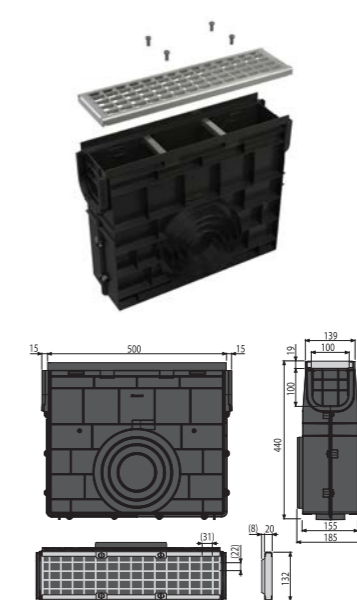
The higher load class of 12,500 kg is designed for drainage of sidewalks, pedestrian zones and similar areas. Parking exclusively for passenger cars and parking houses.



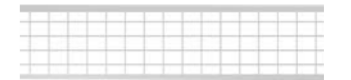
**AVZ102-R103**  
Outdoor drain channel 100 mm with plastic frame and galvanized grid B125



**AVZ102R-R103S**  
Outdoor drain box for AVZ102 with plastic frame and galvanized grid B125



Galvanized grid  
**(AVZ102-R103)**



Composite grid  
**(AVZ104-R402)**



Code	Type of grid	Length	Width	Height	Inlet cross section	Weight
AVZ102-R103	Galvanized grid	1000 mm	139 mm	145 mm	881 cm <sup>2</sup> /m	5.3 kg
AVZ102R-R103S	Galvanized grid	500 mm	139/185 mm	440 mm	440.5 cm <sup>2</sup> /m	4.9 kg
AVZ104-R402	Composite grid	1000 mm	139 mm	145 mm	364 cm <sup>2</sup> /m	3.7 kg
AVZ104R-R402	Composite grid	500 mm	139/185 mm	440 mm	182 cm <sup>2</sup> /m	4 kg



## Outdoor drains and drain boxes PROFI

For drainage of professional parking areas for passenger cars, pedestrian zones, side bands on roads and adjacent sidewalks.

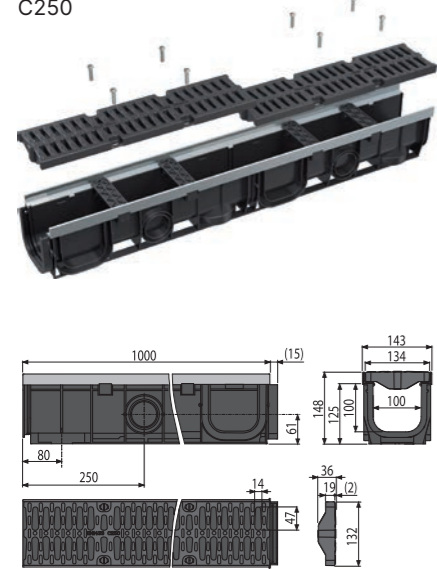


**6**  
year guarantee



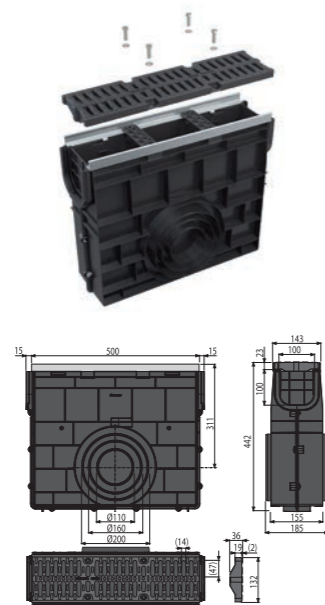
### AVZ103-R403

Outdoor drain channel 100 mm with metal frame and composite grid C250



### AVZ103R-R403

Outdoor drain box for AVZ103 with metal frame and composite grid C250



Composite grid  
(AVZ103-R403)



Cast iron grid  
(AVZ103-R202)



Galvanized grid  
(AVZ103-R104)



Code	Type of grid	Length	Width	Height	Inlet cross section	Weight
AVZ103-R403	Composite grid	1000 mm	143 mm	148 mm	364 cm <sup>2</sup> /m	6.2 kg
AVZ103R-R403	Composite grid	500 mm	143/185 mm	442 mm	182 cm <sup>2</sup> /m	5 kg
AVZ103-R202	Cast iron grid	1000 mm	143 mm	148 mm	434 cm <sup>2</sup> /m	11.5 kg
AVZ103R-R202	Cast iron grid	500 mm	143/185 mm	442 mm	217 cm <sup>2</sup> /m	7.6 kg
AVZ103-R104	Galvanized grid	1000 mm	143 mm	148 mm	770 cm <sup>2</sup> /m	9.3 kg
AVZ103R-R104S	Galvanized grid	500 mm	143/185 mm	442 mm	385 cm <sup>2</sup> /m	6.7 kg

## Slotted drains and drain boxes with asymmetric access cover

It is ideal for pedestrian zones, squares, sports fields, gardens, residential buildings and courtyards. Meet the load requirement for C250.

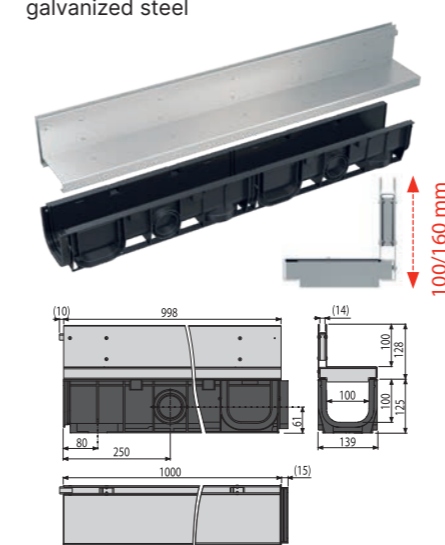


**6**  
year guarantee



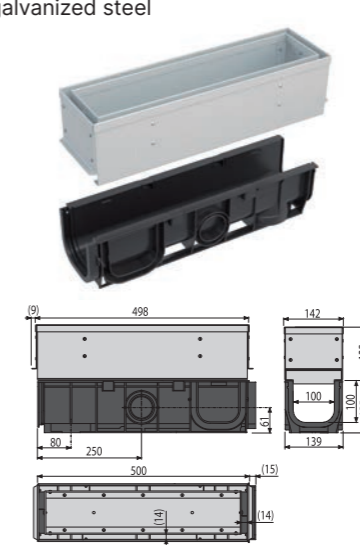
### AVZ101-R121

Outdoor slotted channel with asymmetrical extension 100 mm, galvanized steel



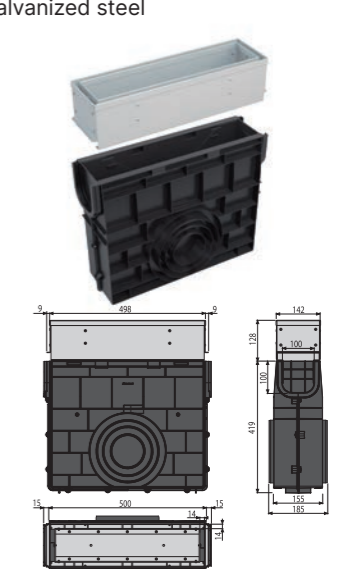
### AVZ101S-R121R

Outdoor slotted channel with asymmetrical access cover 100 mm, galvanized steel



### AVZ101R-R121R

Outdoor slotted drain box with asymmetrical access cover 100 mm, galvanized steel



Code	Type of grid	Length	Width	Height	Inlet cross section	Weight
AVZ101-R121	Galvanized grid	1000 mm	142 mm	253 mm	140 cm <sup>2</sup> /m	7.8 kg
AVZ101-R122	Galvanized grid	1000 mm	142 mm	313 mm	140 cm <sup>2</sup> /m	9.4 kg
AVZ101S-R121R	Galvanized grid	500 mm	142 mm	253 mm	168 cm <sup>2</sup> /m	6.1 kg
AVZ101S-R122R	Galvanized grid	500 mm	142 mm	313 mm	168 cm <sup>2</sup> /m	7.8 kg
AVZ101R-R121R	Galvanized grid	500 mm	142/185 mm	547 mm	168 cm <sup>2</sup> /m	7.9 kg
AVZ101R-R122R	Galvanized grid	500 mm	142/185 mm	607 mm	168 cm <sup>2</sup> /m	9.7 kg
AVZ101-R321	Stainless steel grid	1000 mm	142 mm	253 mm	140 cm <sup>2</sup> /m	7.8 kg
AVZ101-R322	Stainless steel grid	1000 mm	142 mm	313 mm	140 cm <sup>2</sup> /m	9.4 kg
AVZ101S-R321R	Stainless steel grid	500 mm	142 mm	253 mm	168 cm <sup>2</sup> /m	6.1 kg
AVZ101S-R322R	Stainless steel grid	500 mm	142 mm	313 mm	168 cm <sup>2</sup> /m	7.8 kg
AVZ101R-R321R	Stainless steel grid	500 mm	142/185 mm	547 mm	168 cm <sup>2</sup> /m	7.9 kg
AVZ101R-R322R	Stainless steel grid	500 mm	142/185 mm	607 mm	168 cm <sup>2</sup> /m	9.7 kg

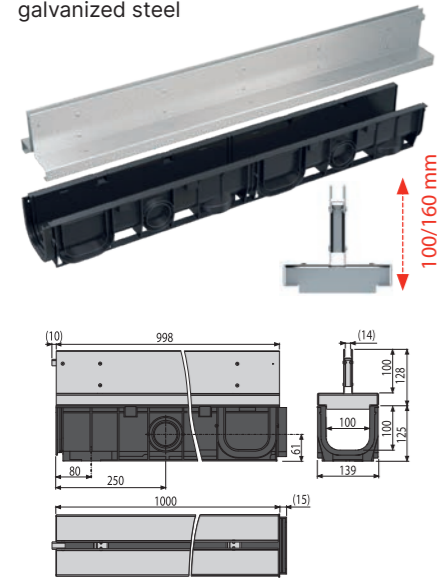


## Slotted drains and drain boxes with symmetrical access cover

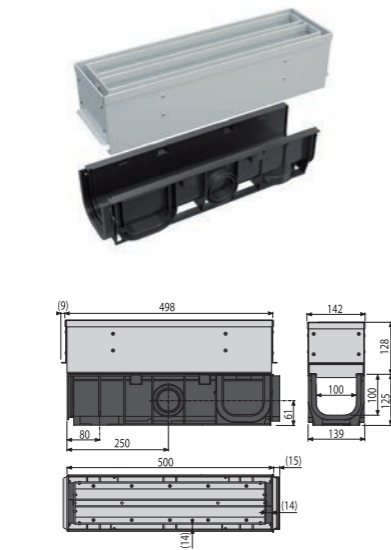
It is ideal for pedestrian zones, squares, sports fields, gardens, residential buildings and courtyards. Meet the load requirement for C250.



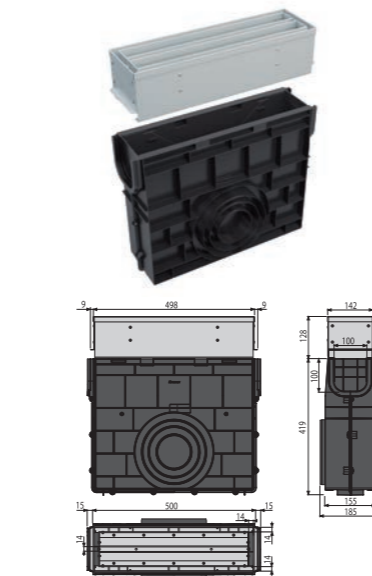
**AVZ101-R123**  
Outdoor slotted channel with symmetrical extension 100 mm, galvanized steel



**AVZ101S-R123R**  
Outdoor slotted channel with symmetrical access cover 100 mm, galvanized steel



**AVZ101R-R123R**  
Outdoor slotted drain box with symmetrical access cover 100 mm, galvanized steel



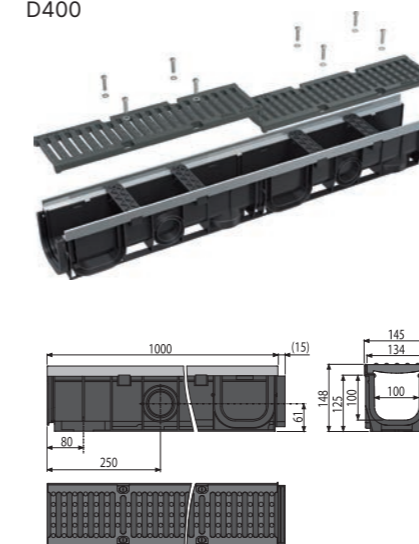
Code	Type of grid	Length	Width	Height	Inlet cross section	Weight
AVZ101-R123	Galvanized grid	1000 mm	142 mm	253 mm	140 cm <sup>2</sup> /m	7.8 kg
AVZ101-R124	Galvanized grid	1000 mm	142 mm	313 mm	140 cm <sup>2</sup> /m	9.5 kg
AVZ101S-R123R	Galvanized grid	500 mm	142 mm	253 mm	232.5 cm <sup>2</sup> /m	7.2 kg
AVZ101S-R124R	Galvanized grid	500 mm	142 mm	313 mm	232.5 cm <sup>2</sup> /m	8.9 kg
AVZ101R-R123R	Galvanized grid	500 mm	142/185 mm	547 mm	232.5 cm <sup>2</sup> /m	9 kg
AVZ101R-R124R	Galvanized grid	500 mm	142/185 mm	607 mm	232.5 cm <sup>2</sup> /m	10.8 kg
AVZ101-R323	Stainless steel grid	1000 mm	142 mm	253 mm	140 cm <sup>2</sup> /m	7.8 kg
AVZ101-R324	Stainless steel grid	1000 mm	142 mm	313 mm	140 cm <sup>2</sup> /m	9.5 kg
AVZ101S-R323R	Stainless steel grid	500 mm	142 mm	253 mm	232.5 cm <sup>2</sup> /m	7.2 kg
AVZ101S-R324R	Stainless steel grid	500 mm	142 mm	313 mm	232.5 cm <sup>2</sup> /m	8.9 kg
AVZ101R-R323R	Stainless steel grid	500 mm	142/185 mm	547 mm	232.5 cm <sup>2</sup> /m	9 kg
AVZ101R-R324R	Stainless steel grid	500 mm	142/185 mm	607 mm	232.5 cm <sup>2</sup> /m	10.8 kg

## Outdoor drains and drain boxes TOP

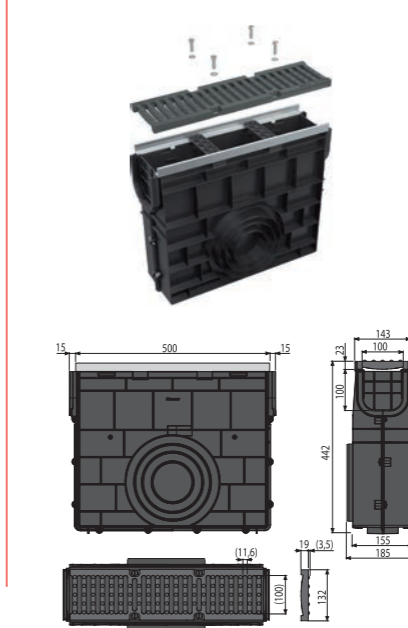
Load class 40,000 kg for drainage of parking lots and often used spaces, logistics centers, road lanes and other similar communications.



**AVZ103-R201**  
Outdoor drain channel 100 mm with metal frame and a cast iron grid D400



**AVZ103R-R201**  
Outdoor drain box for AVZ103 with metal frame and cast iron grid D400



Cast iron grid  
(AVZ103-R201)



Code	Type of grid	Length	Width	Height	Inlet cross section	Weight
AVZ103-R201	Cast iron grid	1000 mm	145 mm	148 mm	448 cm <sup>2</sup> /m	13.4 kg
AVZ103R-R201	Cast iron grid	500 mm	143/185 mm	442 mm	224 cm <sup>2</sup> /m	8.6 kg

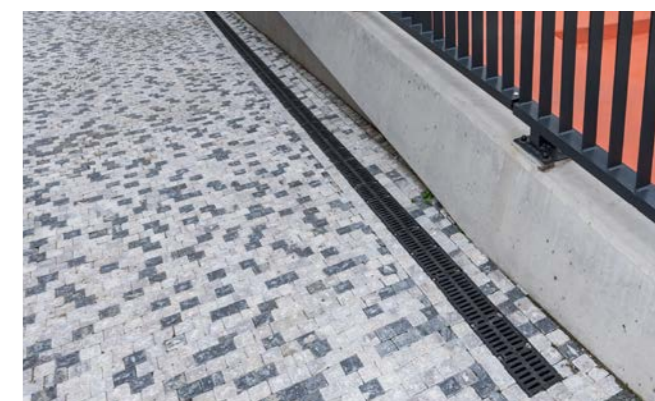
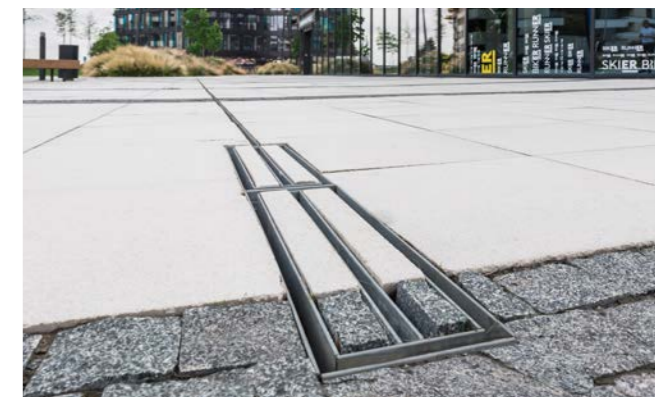




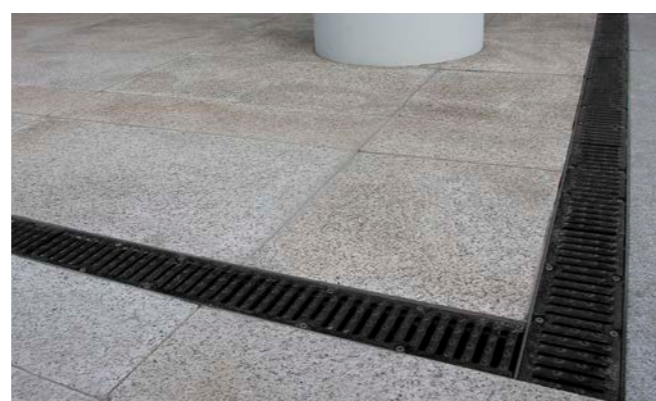
Václav Havel Airport – Prague



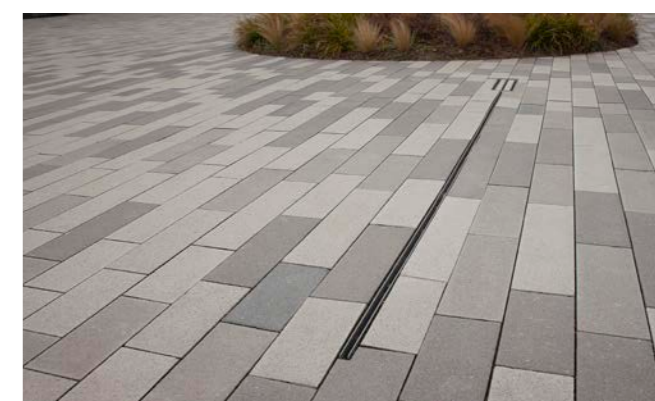
Dynamica – Prague



BB Centrum – Multifunctional complex – Prague 4



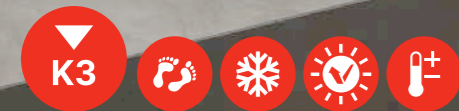
Churchill Square – residential complex – Prague





# Facade and terrace drainage channels

Facade and terrace drainage channels extend our range of outdoor drainage systems. They are especially suitable for the drainage of surface water that accumulates around buildings during rain and snow.



25

year guarantee

## Functionality of the drain

Facade drainage channels ensure drainage of water around buildings to prevent rising damp or potential interior flooding. The drainage channel is able to collect water from the ground layer and then is gradually absorbed into the surrounding terrain via perforated sides.

## Warranty up to 25 years

Material of the drain and grid, technological procedures, periodic load testing and quality control of production within the ISO 9001: 2015 system allow to provide the year warranty of 25 years.

## Two designs

There is a choice of two materials – galvanized steel and stainless steel. All models are adjustable in height, so that their installation is as simple as possible. Meet the load class K3 and there is a choice of four grid designs.

## Advantages:

- Easy installation
- Simple cleaning
- Quality processing
- Possibility of height adjustment of the drainage channel
- The possibility of tailor-made production
- Fixing bolts – ensure perfect attachment of the grid in the channel and eliminate the sound effect during the use of the channel

## Application:

- Balconies and terraces
- Permeable areas in the garden
- Drainage along building facades
- Protection of buildings against the ingress of water, or even against the water sprayed on the facade when it rains

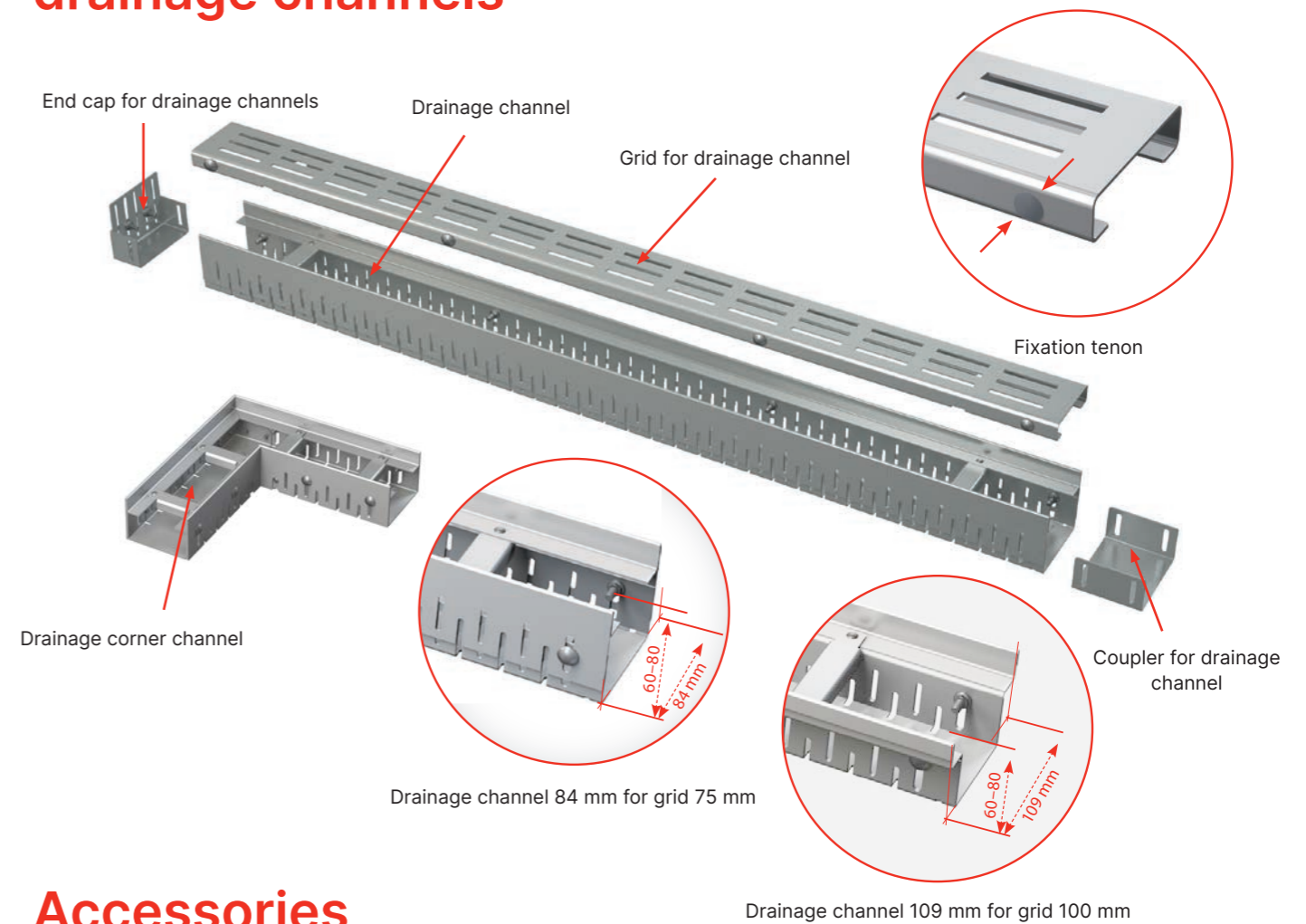
## Features:

- 2 types of material (galvanized steel/ stainless steel)
- Grid width: 75 and 100 mm
- Standard length of drainage channels is 1 m
- Height adjustable drainage channel body 60–80 mm
- Load class: K3 = 300 kg
- Accessories: coupler, end cap (galvanized/stainless steel)
- 4 grid designs (galvanized steel/ stainless steel)

**K3** Load class K3 = 300 kg

Designed for sites without traffic

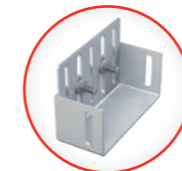
## Technical solution of facade and terrace drainage channels



## Accessories

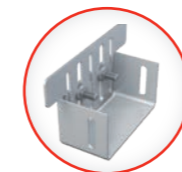
### ADZ-P001

End cap for drainage channel 75 mm, stainless steel



### ADZ-P002

End cap for drainage channel 100 mm, stainless steel



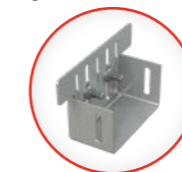
### ADZ-P003

End cap for drainage channel 75 mm, galvanized steel



### ADZ-P004

End cap for drainage channel 100 mm, galvanized steel



### ADZ-P005

Coupler for drainage channel 75 mm, stainless steel



### ADZ-P006

Coupler for drainage channel 100 mm, stainless steel



### ADZ-P007

Coupler for drainage channel 75 mm, galvanized steel



### ADZ-P008

Coupler for drainage channel 100 mm, galvanized steel





## Facade and terrace drainage channels 75 mm

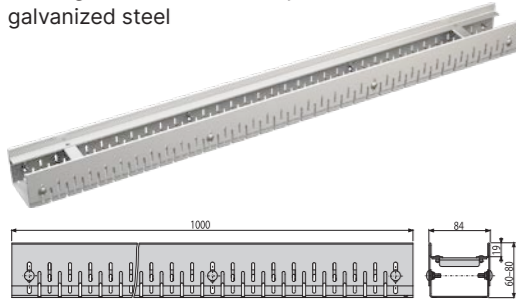
Drainage channels are suitable for drainage of balconies, terraces or permeable areas in the garden. Meet the load requirement K = 300 kg.



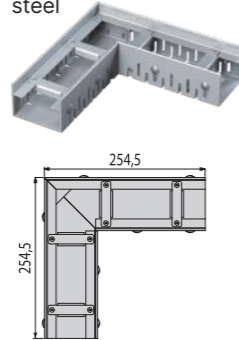
**25**  
year guarantee



**ADZ101V**  
Drainage channel 75 mm adjustable, galvanized steel



**ADZ101VR**  
Drainage corner channel 75 mm adjustable, galvanized steel



**ADZ-R101**  
Grid for drainage channel 75 mm, galvanized steel



**ADZ-R102**  
Grid for drainage channel 75 mm, galvanized steel



**ADZ-R103**  
Grid for drainage channel 75 mm, galvanized steel



**ADZ-R304**  
Grid for drainage channel 75 mm, stainless steel



Code	Material	Length	Width	Height	Inlet cross section	Weight
ADZ101V	galvanized steel	1000 mm	84 mm	60–80 mm	–	3.3 kg
ADZ101VR	galvanized steel	254.5 mm	84 mm	60–80 mm	–	1.8 kg
ADZ301V	stainless steel	1000 mm	84 mm	60–80 mm	–	3.3 kg
ADZ301VR	stainless steel	254.5 mm	84 mm	60–80 mm	–	1.8 kg
Code	Type of grid	Length	Width	Height	Inlet cross section	Weight
ADZ-R101	Galvanized grid	1000 mm	75 mm	20 mm	136 cm <sup>2</sup> /m	1.2 kg
ADZ-R102	Galvanized grid	1000 mm	75 mm	20 mm	172 cm <sup>2</sup> /m	1.2 kg
ADZ-R103	Galvanized grid	1000 mm	75 mm	20 mm	102 cm <sup>2</sup> /m	1.2 kg
ADZ-R101R	Galvanized grid	249 mm	75 mm	20 mm	49 cm <sup>2</sup> /m	0.6 kg
ADZ-R102R	Galvanized grid	249 mm	75 mm	20 mm	71 cm <sup>2</sup> /m	0.5 kg
ADZ-R103R	Galvanized grid	249 mm	75 mm	20 mm	40 cm <sup>2</sup> /m	0.6 kg
ADZ-R301	Stainless steel grid	1000 mm	75 mm	20 mm	136 cm <sup>2</sup> /m	1.2 kg
ADZ-R302	Stainless steel grid	1000 mm	75 mm	20 mm	172 cm <sup>2</sup> /m	1.2 kg
ADZ-R303	Stainless steel grid	1000 mm	75 mm	20 mm	102 cm <sup>2</sup> /m	1.2 kg
ADZ-R304	Stainless steel grid	1000 mm	75 mm	20 mm	539 cm <sup>2</sup> /m	2.6 kg
ADZ-R301R	Stainless steel grid	249 mm	75 mm	20 mm	49 cm <sup>2</sup> /m	0.6 kg
ADZ-R302R	Stainless steel grid	249 mm	75 mm	20 mm	71 cm <sup>2</sup> /m	0.5 kg
ADZ-R303R	Stainless steel grid	249 mm	75 mm	20 mm	40 cm <sup>2</sup> /m	0.6 kg
ADZ-R304R	Stainless steel grid	249 mm	75 mm	20 mm	228 cm <sup>2</sup> /m	1.2 kg

## Facade and terrace drainage channels 100 mm

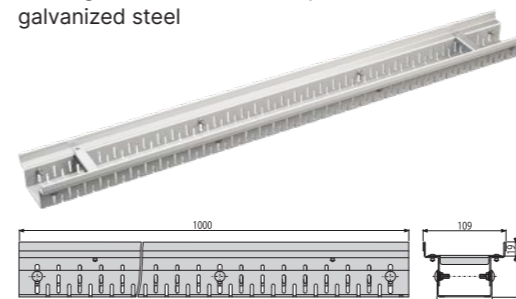
Drainage channels are suitable for drainage of balconies, terraces or permeable areas in the garden. Meet the load requirement K = 300 kg.



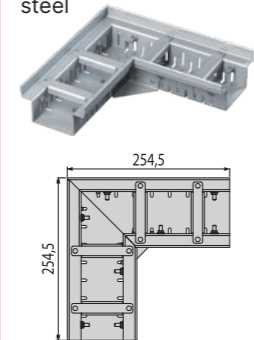
**25**  
year guarantee



**ADZ102V**  
Drainage channel 100 mm adjustable, galvanized steel



**ADZ102VR**  
Drainage corner channel 100 mm adjustable, galvanized steel



**ADZ-R121**  
Grid for drainage channel 100 mm, galvanized steel



**ADZ-R123**  
Grid for drainage channel 100 mm, galvanized steel



**ADZ-R122**  
Grid for drainage channel 100 mm, galvanized steel



**ADZ-R324**  
Grid for drainage channel 100 mm, stainless steel



Code	Material	Length	Width	Height	Inlet cross section	Weight
ADZ102V	galvanized steel	1000 mm	109 mm	60–80 mm	–	3 kg
ADZ102VR	galvanized steel	254.5 mm	109 mm	60–80 mm	–	1.6 kg
ADZ302V	stainless steel	1000 mm	109 mm	60–80 mm	–	3 kg
ADZ302VR	stainless steel	254.5 mm	109 mm	60–80 mm	–	1.6 kg
Code	Type of grid	Length	Width	Height	Inlet cross section	Weight
ADZ-R121	Galvanized grid	1000 mm	100 mm	20 mm	227 cm <sup>2</sup> /m	1.4 kg
ADZ-R122	Galvanized grid	1000 mm	100 mm	20 mm	161 cm <sup>2</sup> /m	1.4 kg
ADZ-R123	Galvanized grid	1000 mm	100 mm	20 mm	170 cm <sup>2</sup> /m	1.4 kg
ADZ-R121R	Galvanized grid	249 mm	100 mm	20 mm	81 cm <sup>2</sup> /m	0.6 kg
ADZ-R122R	Galvanized grid	249 mm	100 mm	20 mm	64 cm <sup>2</sup> /m	0.6 kg
ADZ-R123R	Galvanized grid	249 mm	100 mm	20 mm	67 cm <sup>2</sup> /m	0.6 kg
ADZ-R321	Stainless steel grid	1000 mm	100 mm	20 mm	227 cm <sup>2</sup> /m	1.4 kg
ADZ-R322	Stainless steel grid	1000 mm	100 mm	20 mm	161 cm <sup>2</sup> /m	1.4 kg
ADZ-R323	Stainless steel grid	1000 mm	100 mm	20 mm	170 cm <sup>2</sup> /m	1.4 kg
ADZ-R324	Stainless steel grid	1000 mm	100 mm	20 mm	719 cm <sup>2</sup> /m	3.4 kg
ADZ-R321R	Stainless steel grid	249 mm	100 mm	20 mm	81 cm <sup>2</sup> /m	0.6 kg
ADZ-R322R	Stainless steel grid	249 mm	100 mm	20 mm	64 cm <sup>2</sup> /m	0.6 kg
ADZ-R323R	Stainless steel grid	249 mm	100 mm	20 mm	67 cm <sup>2</sup> /m	0.6 kg
ADZ-R324R	Stainless steel grid	249 mm	100 mm	20 mm	291 cm <sup>2</sup> /m	1.5 kg



# Universal rain drums

Rain drum with dry flap and basket for capturing impurities.



6

year guarantee

### Drain body with high flow rate

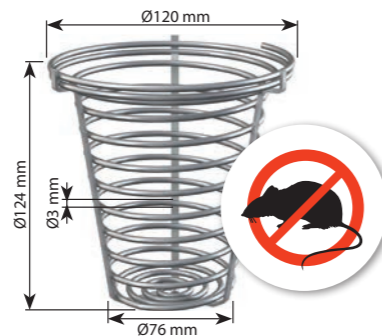
The rain drum body is made of polypropylene enriched with fiberglass. This makes it enormously resistant to chemical, mechanical and thermal damage. Deeper and steeper gradient of the rain drum body enables a faster and bigger water flow towards the sewer. The water flow can be up to 486 l/min. Ribbing provides strength and stability on the spot. Straight or side outlet connection. Direct connection has a diameter of DN110, DN125 or universal DN125/110. Diameter of DN110 is suitable for a roof drainage with surface area upto 116 m<sup>2</sup>, diameter DN 125 is suitable for roof drainage with surface area upto 190 m<sup>2</sup>. The rain drums are produced in black or gray colours.

### Secured flap

The flap forms a dry trap – limits the transmission of gas from the sewer. Prevents the passage of rodents from the waste. Closes under its own weight and is secured against flooding

### Basket for catching dirt and leaves

Captures coarse material (mainly leaves) and prevents clogging of sewer pipes. The narrow bottom with ribs allows a gradual fall through of rotting leaves into sewerage. Basket can be easily removed for cleaning.



**Stainless steel basket for catching dirt and leaves AGV941**

As an accessory you can purchase a stainless steel basket for catching dirt and leaves, which is also resistant to damage from rodents thus preventing them from accessing from the roof downpipes. This basket is compatible with most rain drums in the market.

### Inlet rings

Each pack includes a set of eccentric spacer rings, which facilitate the connection of roof downspouts with diameters of 80, 90, 100, 110 and 125 mm. Rings material contains UV stabilizers against aging, fading and degradation of plastics.

Frame and spacer rings are manufactured in black, gray or brick-red colours. This makes it possible to combine the visual part of the rain drum with the color of selected tiles.

### Cover lock

Using the cover lock during heavy rain prevents the cover from opening and flooding the area around it. Locked lid prevents access of children to the drum while playing. The lid and the lock are manufactured in black, gray or brick-red colour.

### AGV1/AGV1S

Rain drum 300×155/110 mm straight outlet, black  
Rain drum 300×155/110 mm straight outlet, grey

### AGV2/AGV2S

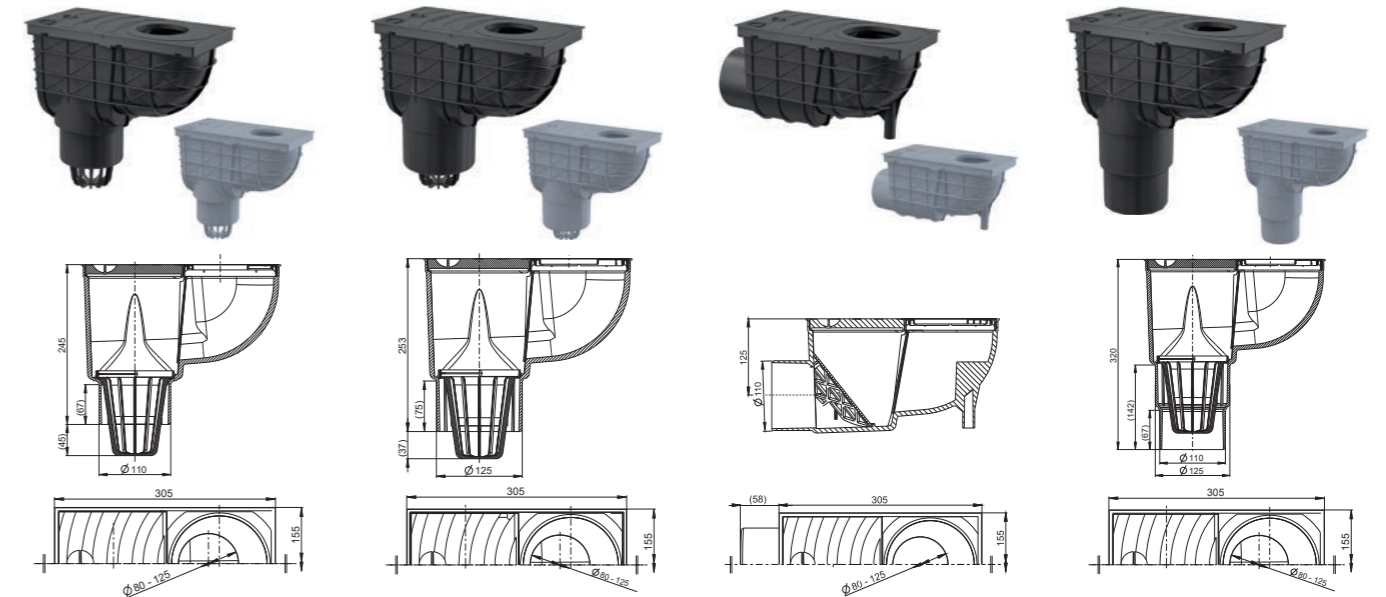
Rain drum 300×155/125 mm straight outlet, black  
Rain drum 300×155/125 mm straight outlet, grey

### AGV3/AGV3S

Rain drum 300×155/110 mm side outlet, black  
Rain drum 300×155/110 mm side outlet, grey

### AGV4/AGV4S

Rain drum 300×155/125/110 mm straight outlet, black  
Rain drum 300×155/125/110 mm straight outlet, grey



### Lock

- The lock prevents unintentional opening of the lid and overflow of water during heavy rains
- Prevents the access of children at play
- If necessary, it is possible to remove the lock from the rain drum

### Basket for leaves and dirt

- Captures coarse material (mainly leaves) and prevents clogging of waste pipes
- The narrow bottom with ribs allows a gradual fall through of rotting leaves into sewerage
- Basket can be easily removed for cleaning.

### Material

- Polypropylene enriched with glass fiber
- Resistant to mechanical and thermal damage
- UV stable – resistant to plastic degradation and fading
- In black or gray colours

### Inlet rings

- They are part of each package
- Diameters 80, 90, 100, 110, 125 mm
- They allow the connection of all types of roof gutters and downspouts

### Flap

- Frost-free odour trap – limits the transmission of gas from canalization
- Prevents the passage of rodents from the waste
- Closes under its own weight and is secured against flooding
- Restricts splashing water from the rain drum when removing the lock case

### Construction

- Resistant to deformation during assembly and to the load (class K3 – bearing capacity of 300 kg)
- Ribbing ensures stability on the spot
- Deeper and steeper gradient of the rain drum body enables a faster and bigger water flow towards the sewer
- Flow rate 390 l/min.
- Diameter 110, 125 mm or 125/110 mm



# Floor drains

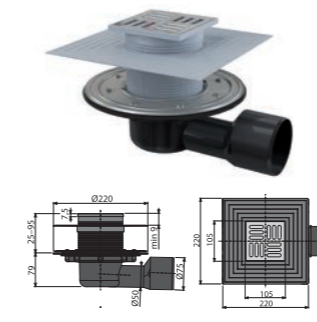
They represent the ideal solution for point drainage areas such as bathrooms, terraces, balconies, basements, boiler rooms, swimming pools, horizontal roofs and other places without traffic.



**6**  
year guarantee

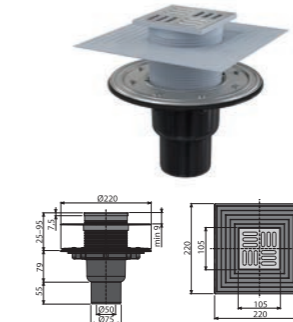
### APV3344

Floor drain 105×105/50/75 mm side outlet, stainless steel grid, stainless steel flange and collar-2nd level insulation, wet and dry odour trap



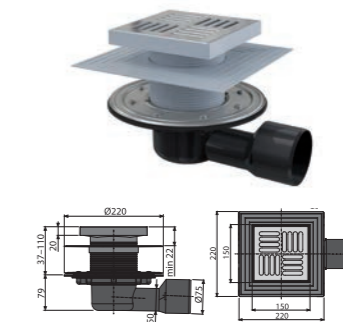
### APV4344

Floor drain 105×105/50/75 mm straight outlet, stainless steel grid, stainless steel flange and collar-2nd level insulation, wet and dry odour trap



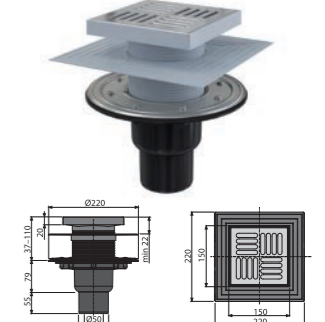
### APV3444

Floor drain 150×150/50/75 mm side outlet, stainless steel grid, stainless steel flange and collar-2nd level insulation, wet and dry odour trap



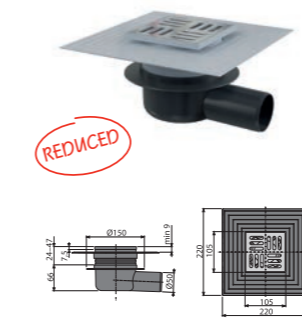
### APV4444

Floor drain 150×150/50/75 mm straight outlet, stainless steel grid, stainless steel flange and collar-2nd level insulation, wet and dry odour trap



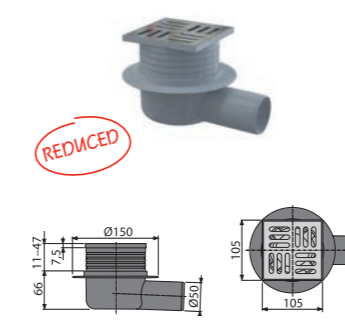
### APV26C

Floor drain 105×105/50 mm side outlet, stainless steel grid, collar-2nd level insulation, dry odour trap



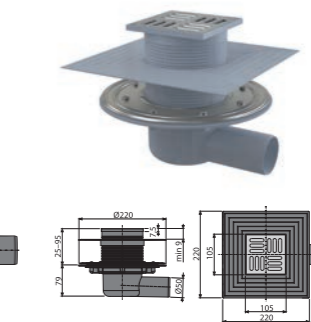
### APV26

Floor drain 105×105/50 mm side outlet, stainless steel grid, wet odour trap



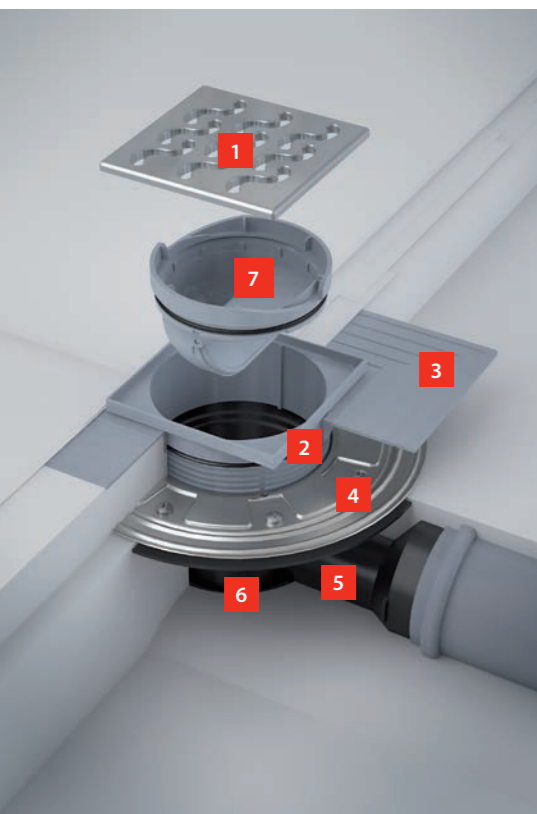
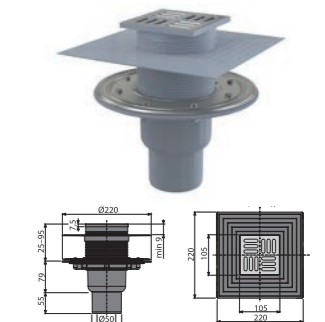
### APV1324

Floor drain 105×105/50 mm side outlet, stainless steel grid, stainless steel flange and collar-2nd level insulation, combined odour trap SMART



### APV2324

Floor drain 105×105/50/75 mm straight outlet, stainless steel grid, stainless steel flange and collar-2nd level insulation, combined odour trap SMART



#### 1 Grid

You can choose from a variety of sizes, materials and grid designs. Guaranteed maximum load capacity is 300 kg.

#### 2 Floor drain throat

The floor drain throat has a sufficient construction height of up to 95 mm.

#### 3 Collar -2nd level insulation

2nd level insulation collar allows connection of an insulating layer deposited directly beneath the pavement at the throat inlet.

#### 4 Stainless steel flange

Stainless steel flange insures the connection of the drain to the

buildings waterproofing made with a waterproofing membrane.

#### 5 Wide floor drain collar

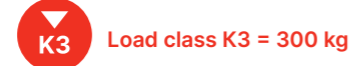
Floor drain collar is designed to ensure a quality connection to the construction site's waterproofing system.

#### 6 Floor drain body

Floor drain bodies are made of polypropylene, which is resistant to mechanical, chemical and thermal damage up to 95 °C.

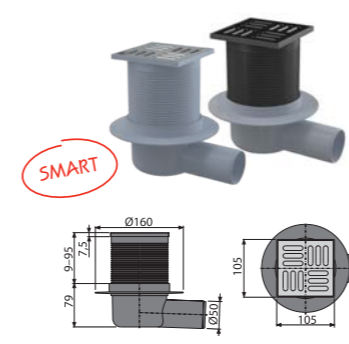
#### 7 Odour trap

You can choose from three basic types of odour traps: wet, combined and dry.



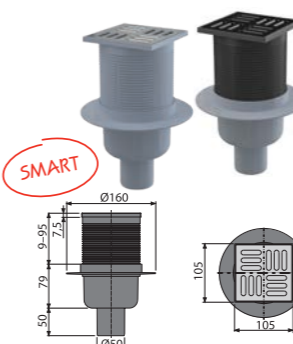
### APV31/APV31BLACK

Floor drain 105×105/50 mm side outlet, stainless steel grid, combined odour trap SMART



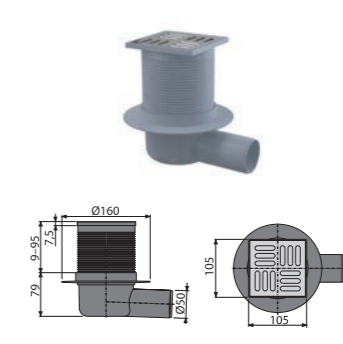
### APV32/APV32BLACK

Floor drain 105×105/50 mm straight outlet, stainless steel grid, combined odour trap SMART



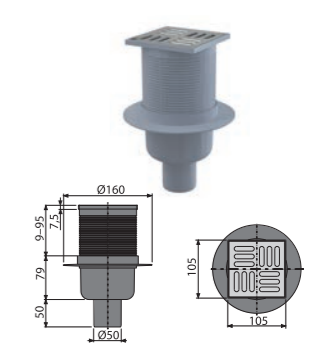
### APV1

Floor drain 105×105/50 mm side outlet, stainless steel grid, wet odour trap



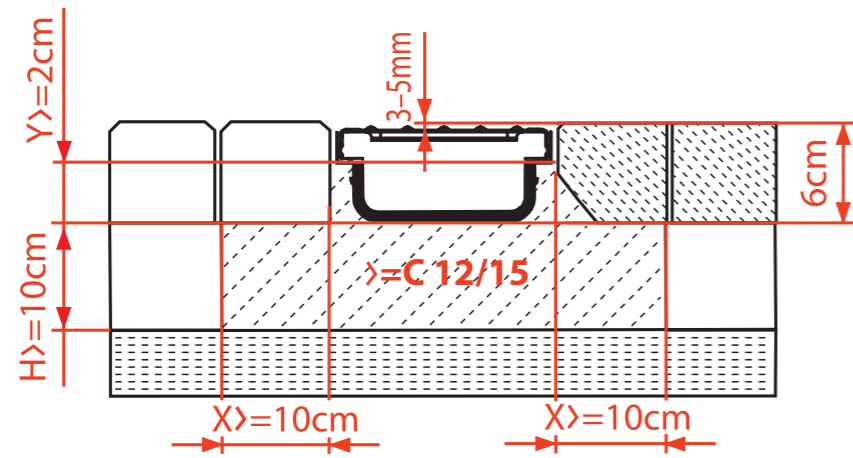
### APV2

Floor drain 105×105/50 mm straight outlet, stainless steel grid, wet odour trap

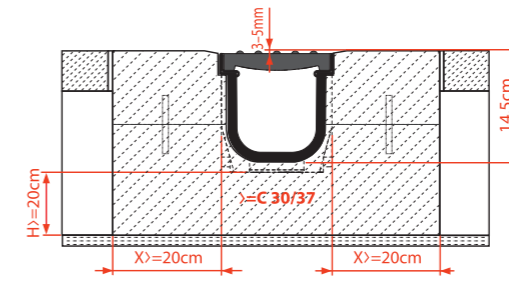
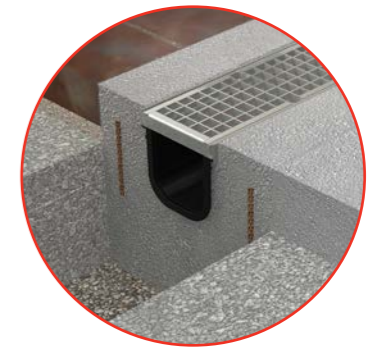
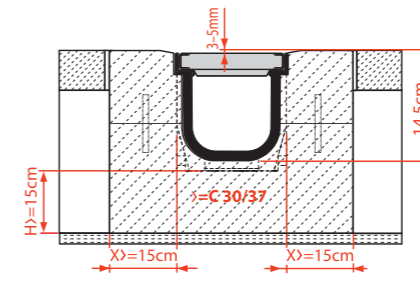
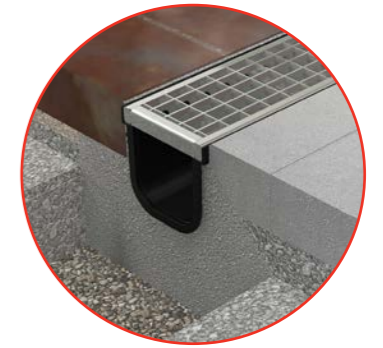
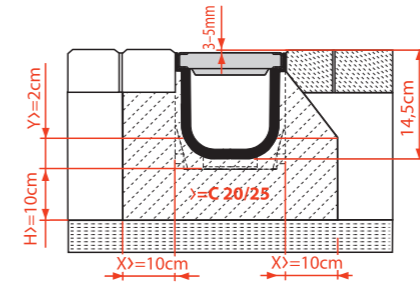
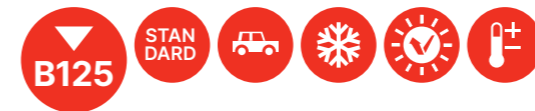
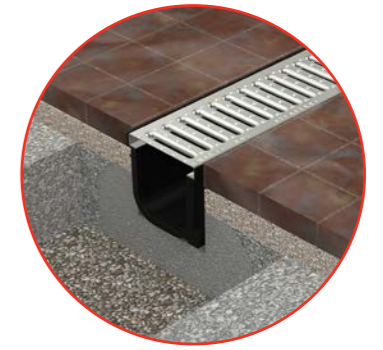
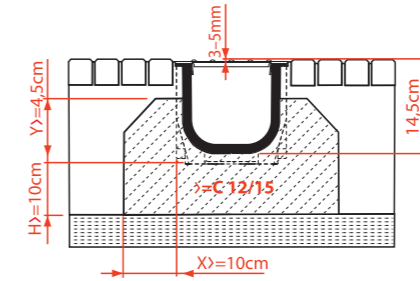




SAMPLE MOUNTING – REDUCED OUTDOOR DRAIN



SAMPLE DRAIN INSTALLATION ACCORDING TO LOAD CLASS





# alca GROUP

## alcadrain

Sanitary systems

Czech Republic  
Alcadrain s. r. o.  
Komunardů 1626/35  
170 00 Prague 7 – Holešovice  
T: +420 519 821 117 – sale in the Czech Republic  
+420 519 821 041 – export  
alcadrain@alcadrain.com  
www.alcadrain.com

## alcapipe

Piping systems

Czech Republic  
FV – Plast, a.s.  
Kozovazská 1049/3  
250 88 Čelákovice  
T: +420 326 706 711  
fv-plast@fv-plast.cz  
www.fvplast.com

## alcafix

System walls

Czech Republic  
Alcadrain s. r. o.  
Komunardů 1626/35  
170 00 Praha 7 – Holešovice  
alcafix@alcafix.com  
www.alcafix.com

Our team of specialists is always on hand to help with design, installation and quote project prices.

The warranty stated for individual products applies only to the functional technical properties of the product, does not apply to wear and tear of the product caused by its normal use or defects caused by non-compliance with general product handling principles or non-compliance with product instructions. Complete warranty conditions at [www.alcadrain.com/guarantee](http://www.alcadrain.com/guarantee).



Czech manufacturer, ISO 9001: 2015  
Edition 1/2022 EN, © Alcadrain s.r.o  
Changes in dimensions and designs reserved.